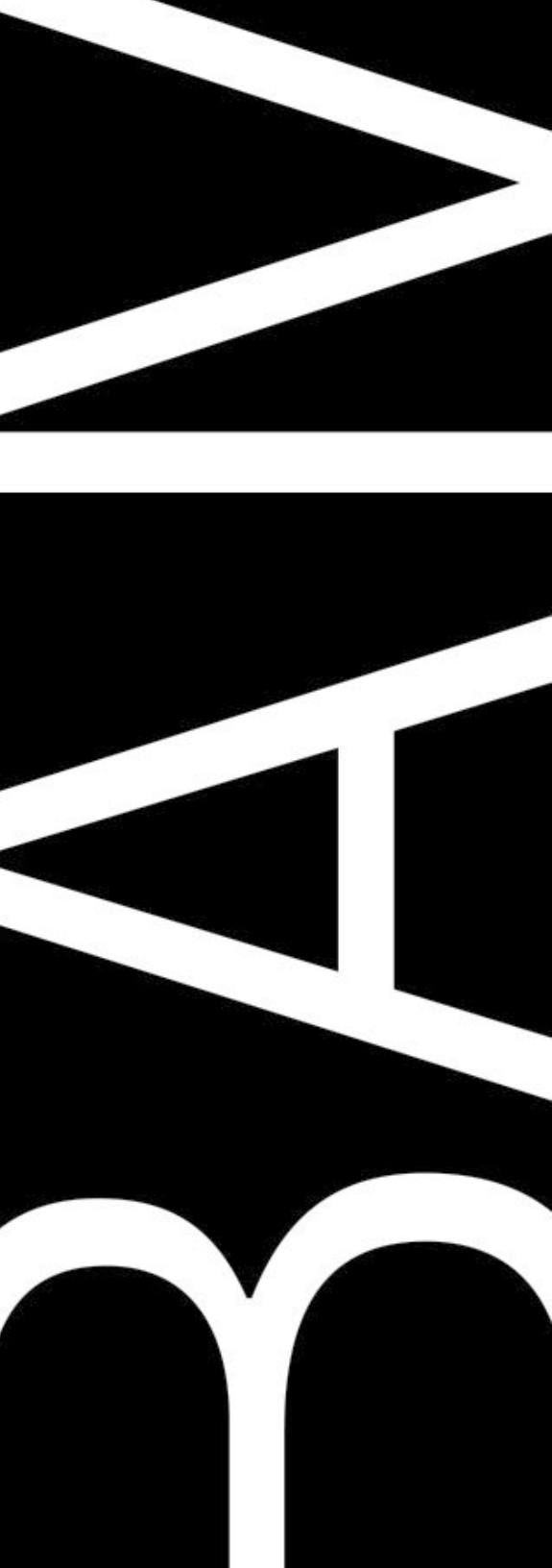




BAM 2016  
ANNUAL REPORT



# BAM's mission is to be the home for adventurous artists, audiences, and ideas.

3—6

## GREETINGS

Chair Letter, 4

President & Executive Producer's Letter, 5

BAM Campus, 6

7—35

## WHAT WE DO

2015 Next Wave Festival, 8–10

2016 Winter/Spring Season, 11–13

Also On Stage, 14

BAM Rose Cinemas, 15–20

First-run Films, 16

BAMcinématek, 17–18

BAMcinemaFest, 19

HD Screenings, 20

BAMcafé Live, 21–22

BAM Hamm Archives, 23

Digital Media, 24

Education & Humanities, 25–30

Community, 31–33

DanceMotion USA<sup>SM</sup>, 34–35

Visual Art, 36–37

Membership, 38

Membership, 37–39

40—47

## WHO WE ARE

BAM Board, 41

BAM Supporters, 42–45

BAM Staff, 46–47

48—50

## NUMBERS

BAM Financial Statements, 49–50

51—55

## THE TRUST

BET Chair Letter, 52

BET Donors, 53

BET Financial Statements, 54–55

# Greetings





# Change is anticipated, expected, welcomed.

— Alan H. Fishman

## Dear Friends,

As you all know, and perhaps celebrated (!), I stepped down as chairman of this miraculous institution effective December 31, 2016. Change at BAM is in our DNA. Change is anticipated, expected, welcomed. In that spirit we welcome Adam Max as our new chairman. We want to thank the BAM staff for their support during this time of change, and President Katy Clark has done a superb job in leading the effort.

All of our performance venues have been incredibly busy with fresh work. In the 2015 Next Wave, our most intimate theater, the BAM Fishman Space, has hit its stride with work from Miranda July, Carl Hancock Rux, Souleymane Badolo, and Maya Beiser, among others. Joe Melillo continued his intensive exploration of physical theater with wonderful performances from James Thierrée and Martin Zimmerman. Moreover, we had an amazing set of theater and music works including great shows from SITI Company/

Anne Bogart, Ivo van Hove, William Kentridge, and many others.

Our 2016 Winter/Spring season included runs of the wondrous four-play King and Country series from the Royal Shakespeare Company. In a great performance, Rupert Everett starred in *The Judas Kiss*. We had wonderful productions from the fabled Mariinsky Theatre, Les Arts Florissants, RadioLoveFest, Trisha Brown Dance Company, and more. Last but certainly not least, the beloved DanceAfrica celebrated Senegal to a packed house, as always.

Our neighborhood continues to change along with us. More neighbors are coming to our movie screens and our stages. Fort Greene welcomes new folks, new businesses, and a lot of good new food! We welcome everyone to BAM!

In this period Karen Brooks Hopkins, our beloved president emerita, stepped down.

Long time trustee Beth Rudin Dewoody became an honorary trustee. Mark Jackson and Danny Simmons, both great trustees, stepped down as well.

In addition to Katy Clark, we welcome Jonathan Auerbach and Anoushka Healy to the board.

We thank Mayor Bill de Blasio and the New York City Department of Cultural Affairs, led by Commissioner Tom Finkelpearl. We also salute the New York City Council, including Council Speaker Melissa Mark-Viverito, Finance Committee Chair Julissa Ferreras, Cultural Affairs Committee Chair Jimmy Van Bramer, the Brooklyn Delegation of the Council, Council Member Laurie A. Cumbo, and Brooklyn Borough President Eric L. Adams.

As I end my leadership role, I want to express my thanks to all I have met and worked with along the way. Together we have accomplished much for artists, audiences, and our community. BAM is in great hands with outstanding board leadership, Katy, Joe, and a spectacular staff.

Thank you all and see you at BAM.

Sincerely,

Alan H. Fishman



# Hello!

This report covers the fiscal year from July 2015 through June 2016, but given the time of this letter's drafting, we'd be remiss in not mentioning sad news. This year BAM lost a foundational member of its family. During his 32-year tenure, Harvey Lichtenstein transformed our institution into a dynamic showcase for emerging artists and boundary-pushing productions. The Harvey Theater, Rose Cinemas, and Lepercq Space are testaments to his vision for BAM and the ever-expanding cultural district to which it belongs. As we gathered in his theater for a music-and-dance-filled farewell, we were touched by the dedications and remembrances from artists and colleagues all over the world. It cemented what we have always known—Harvey was one of a kind.

The 2015 Next Wave Festival, yet another enduring Harvey legacy, ushered the return of Mark Morris Dance Group's beloved *The Hard Nut*, a rollicking holiday favorite. *Refuse the Hour*, a multimedia chamber opera featuring the imitable artist William Kentridge, was a perfect showcase of the Festival's hybrid nature. Winter/Spring 2016 was anchored by powerhouse productions from Trisha Brown Dance Company and the Royal Shakespeare Company, whose epic King and Country cycle marked the 400th anniversary of Shakespeare's death.

BAMcinématek had another groundbreaking year with the world premiere run of Jacques Rivette's 1971 13-hour masterpiece *OUT 1: noli me tangere*. Eat, Drink & Be Literary, a partnership program with National Book

Foundation, hosted Karl Ove Knausgaard, Eileen Myles, and others for dinner and conversation. BAMkids presented concerts, movie matinees, and special programming for kids and families, with highlights including the annual Halloween event BAMboo! and Disney Classic Cartoon Shorts.

Our campus continues to grow with the ongoing construction of the BAM Karen and the announcement of BAM Strong project. BAM Karen, located within the mixed-use apartment tower 300 Ashland, will house additional cinema screens and the BAM Hamm Archives. BAM Strong will connect the Harvey Theater to an adjacent vacant site and the ground floor of a high-rise condominium at 230 Ashland Place. The space will include a visual art exhibition space and a sculpture terrace.

We are grateful to our colleagues, artists, friends, and donors for another exciting and fulfilling year—both on stage and off. Thank you!

Sincerely,

Katy Clark, President

Joseph V. Melillo, Executive Producer

# THE BAM CAMPUS



BAM Harvey Theater | Photo: Elena Olivo

## BAM HARVEY THEATER

651 Fulton Street

BAM Harvey Theater

Campbell Lobby



Fisher Building | Photo: Francis Dzikowski

## BAM FISHER

321 Ashland Place

Judith and Alan Fishman Space

Rita K. Hillman Studio

Geraldine Stutz Gardens

Max Leavitt Theater Workshop

Samuel H. Scripps Stage

Peter Jay Sharp Lobby

THE COUNTRY'S  
OLDEST  
PERFORMING  
ARTS  
INSTITUTION  
DYNAMICALLY  
LEADS THE  
BROOKLYN  
CULTURAL  
DISTRICT



Stars by Leo Villareal, BAM Howard Gilman Opera House  
Photo: BAM Hamm Archives

## PETER JAY SHARP BUILDING

30 Lafayette Avenue

BAM Howard Gilman Opera House

BAM Rose Cinemas

Lepercq Space (BAMcafé)

Hillman Attic Studio

Dorothy W. Levitt Lobby

Hillman Penthouse Studio

Diker Gallery Café

Natman Lounge

# What We Do

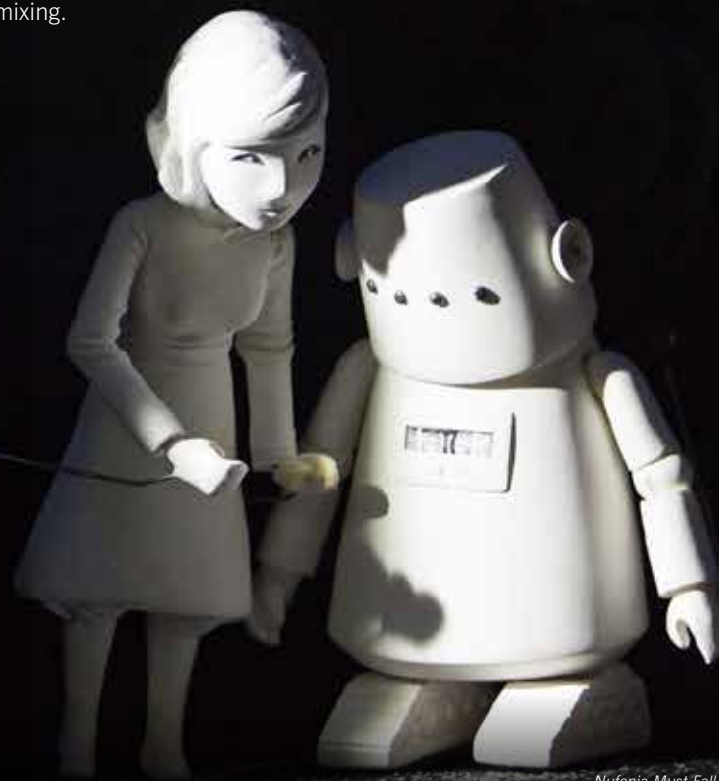
A group of models in white and beige clothing posing in a studio setting. The models are arranged in a line, with some standing and some kneeling or lying on the floor. The background is dark, and the floor is light. The text 'What We Do' is overlaid in large white letters.

## MICRO TO MACRO

Extraordinary puppetry was a highlight of the 2015 Next Wave Festival: *Hagoromo*, a dream-like opera featuring Wendy Whelan amid bunraku puppets, and *Nufonia Must Fall*, in which a tiny, lonely robot's meanderings were projected large onscreen. Contemporary music was represented by collaborations including the big band sound of *Real Enemies*, Maya Beiser's sonorous cello, the neo-rococo stylings of *YOU US WE ALL*, indie band Other Lives, and the immersive environment in *Epiphany: The Cycle of Life* with the Young People's Chorus of New York.

Dance offerings were intriguingly diverse. Hailing from Sweden, Kvarnstrom & Co.'s *TAPE* elevated that sticky material; Seán Curran Co. partnered with Kyrgyz music ensemble Ustatshakirt Plus amid gem-hued carpets in *Dream'd in a Dream*. Next Wave favorites from Asia comprised Cloud Gate Dance Theatre of Taiwan in *Rice*, with breathtaking visuals, and Sankai Juku in *Umusuna: Memories Before History*, a mesmerizing work by Ushio Amagatsu. In *Yimbégré*, Souleymane Badolo played with rhythms; Sasha Waltz & Guests of Germany danced the light and dark *Continu*; *Walking with Trane*, a paean to Coltrane, was presented by Urban Bush Women; and Mark Morris Dance Group celebrated the holiday season with a reprise of *The Hard Nut*. Physical theater productions by James Thierrée, Martin Zimmermann, and Circa delighted audiences, as did the impressive taiko drums of U-Theatre.

New ideas in theater came in the form of *New Society* by Miranda July, each unique performance dependent on the audience; *17 Border Crossings* by Thaddeus Phillips, an examination of the perils of travel; a new *Antigone* by Anne Carson, directed by Ivo van Hove; *Helen Lawrence*, live action film noir by Stan Douglas; South African polymath William Kentridge's *Refuse the Hour*, with his distinctive art and set designs; *Steel Hammer* by SITI Company; and more intimate productions including by Karin Coonrod, Carl Hancock Rux, Marguerite Duras, and Paterson Joseph. Eluding category definition but rewarding intrepid audiences were *More Up a Tree* and *Alas, the Nymphs*, adding to the Next Wave's spirit of genre mixing.





# 2015 NEXT WAVE FESTIVAL



Rice | Photo: Jack Vartoogian



Tabac Rouge | Photo: Jack Vartoogian



All Vows | Photo: Stephanie Berger



Refuse the Hour | Photo: Stephanie Berger

SEP 16—19

## RICE

Cloud Gate Dance Theatre of Taiwan  
Concept and choreography by  
Lin Hwai-Min

SEP 17—20

## NUFONIA MUST FALL

Kid Koala  
The Afiara Quartet  
Directed By K.K. Barrett

SEP 17—19

## COLLAPSE

Timur and the Dime Museum

SEP 23—26

## TAPE

K. Kvarnström & Co/Kulturhuset City  
Theatre Stockholm

SEP 24—OCT 4

## ANTIGONE

By Sophokles  
In a new translation by Anne Carson  
Barbican and Les Théâtres de la  
Ville de Luxembourg  
Directed by Ivo van Hove

SEP 30—OCT 3

## 17 BORDER CROSSINGS

Thaddeus Phillips

SEP 30—OCT 4

## TABAC ROUGE

James Thierrée  
Compagnie du Hanne-ton

OCT 7—10

## DREAM'D IN A DREAM

Seán Curran Company and  
Ustatshakirt Plus

OCT 7—10

## NEW SOCIETY

Miranda July

OCT 9 & 10

## RECONFIGURATION: AN EVENING WITH OTHER LIVES

Mix Tape Productions  
Conceived by Rebecca Habel  
and Terry Kinney  
Directed by Terry Kinney

OCT 14—17

## HELEN LAWRENCE

Canadian Stage  
Conceived and directed by Stan Douglas  
Written by Chris Haddock

OCT 14—17

## ALL VOWS

Maya Beiser

OCT 15—17

## HALLO

Martin Zimmerman

OCT 21—24

## TEXTS&BEHEADINGS/ ELIZABETHR

Compagnia de' Colombari  
Karin Coonrod

OCT 22—25

## REFUSE THE HOUR

William Kentridge  
Phillip Miller  
Dada Masilo, Catherine Meyburgh,  
Peter Galison

OCT 28—31

## UMUSUNA: MEMORIES BEFORE HISTORY

Sankai Juku  
Choreography, concept and direction by  
Ushio Amagatsu

OCT 28—31

## THE EXALTED

Written by Carl Hancock Rux  
Music by Theo Blackmann  
Directed by Anne Bogart

NOV 3—8

## HAGOROMO

International Contemporary Ensemble (ICE)  
Brooklyn Youth Chorus  
Music by Nathan Davis  
Libretto by Brendan Pelsue  
Choreography by David Neumann  
Puppetry by Chris M. Green  
Conducted by Nicholas DeMaison  
Conceived and directed by David Michalek  
Presented in association with American  
Opera Projects

# 2015 NEXT WAVE FESTIVAL



Hagoromo | Photo: Julieta Cervantes



Real Enemies | Photo: Ed Lefkowitz



Yimbégré | Photo: Stephanie Berger

NOV 4—7

## **EPIPHANY: THE CYCLE OF LIFE**

VisionIntoArt  
Young People's Chorus of New York City  
Conducted by Francisco J. Núñez  
Film by Ali Hossaini  
Directed by Michael McQuilken

NOV 4—8

## **OPUS**

Circa  
Debussy String Quartet

NOV 11—14

## **YOU US WE ALL**

Shara Worden, Andrew Ondrejcek, B.O.X.  
(Baroque Orchestration X)

NOV 11—14

## **SAVANNAH BAY**

By Marguerite Duras  
Théâtre de l'Atelier, Paris  
Directed by Didier Bezace

NOV 18—22

## **REAL ENEMIES**

By Darcy James Argue, Isaac Butler,  
and Peter Nigrini  
Secret Society

NOV 19—21

## **BEYOND TIME**

U-Theatre

NOV 19—21

## **MORE UP A TREE**

By de Serpa Soares, Sussman, and White

DEC 2—5

## **YIMBÉGRÉ**

Souleymane Badolo

DEC 2—6

## **STEEL HAMMER**

Julia Wolfe and SITI Company  
Bang on a Can All-Stars  
Directed by Anne Bogart

DEC 4 & 5

## **CONTINU**

Sasha Waltz & Guests  
Directed and choreographed by  
Sasha Waltz  
DEC 9—12

## **WALKING WITH 'TRANE**

Urban Bush Women  
Choreography by Jawole Willa Jo Zollar  
and Samantha Speis, in collaboration  
with the company

DEC 9—12

## **ALAS, THE NYMPHS...**

John Jahnke/Hotel Savant

DEC 12—20

## **THE HARD NUT**

Based on the book by E.T.A. Hoffmann,  
The Nutcracker and the Mouse King  
Mark Morris Dance Group  
Featuring the MMDG Music Ensemble  
and The Hard Nut Singers  
Music by Pyotr Ilyich Tchaikovsky,  
The Nutcracker, Op. 71  
Conducted by Colin Fowler  
Choreography by Mark Morris

DEC 16—20

## **SANCHO: AN ACT OF REMEMBRANCE**

Conceived, written, and performed  
by Paterson Joseph  
Co-directed by Simon Godwin



The Hard Nut | Photo: Julieta Cervantes

# Winter/Spring

# Season



The Winter/Spring 2016 Season brought theatrical heavyweights: the Royal Shakespeare Company with *King and Country*, a cycle of four plays; Actors Theatre of Louisville in Charles Mee's *The Glory of the World*; Russia's Maly Drama Theatre in Chekhov's *The Cherry Orchard*; Rupert Everett in *The Judas Kiss*; and the nimble Civilians in *Rimbaud in New York*.

The Mariinsky Theatre returned under the direction of Valery Gergiev with *Folk, Form, and Fire: The Prokofiev Piano Concertos*, and *A Tribute to Maya Plisetskaya*, with ballet programs by stars Diana Vishneva and Uliana Lopatkina. The Trisha Brown Dance Company focused on large-scale proscenium dances.

Perennial favorites Les Art Florissants performed the fantastical *Les Fêtes Véniennes*, and Compagnia Finzi Pasca of Switzerland presented *La Verità*, a whimsical work of physical theater taking inspiration from a painting by Salvador Dalí.

Live performances of beloved public radio programs returned in RadioLoveFest, including storytelling by *The Moth* and Garrison Keillor, an interview with Edward Snowden by Laura Poitras, the quiz show fun of *Wait Wait... Don't Tell Me!* A concert by music icons Caetano Veloso with Gilberto Gil, and another by Youssou Ndour, thrilled world music fans. DanceAfrica, under the artistic direction of Abdel R. Salaam, closed the season with a fascinating tribute to Senegal.

# 2016 WINTER/SPRING SEASON



*The Glory of the World* | Photo: Joan Marcus

JAN 16—FEB 6

BAM and Knight Blanc present

## THE GLORY OF THE WORLD

By Charles Mee  
Directed by Les Waters  
Actors Theatre of Louisville

JAN 18

## THE 30TH ANNUAL BROOKLYN TRIBUTE TO DR. MARTIN LUTHER KING JR

Presented By BAM, Brooklyn Borough President  
Eric L. Adams, and Medgar Evers College of City  
University Of New York

Keynote Speaker: Michael Eric Dyson  
Performers: The Brooklyn  
Interdenominational Choir  
Kimberly Nichole



Trisha Brown Dance Company | Photo: Julieta Cervantes

JAN 28—30

## TRISHA BROWN DANCE COMPANY

Choreography by Trisha Brown

FEB 17—27

## THE CHERRY ORCHARD

By Anton Chekhov  
Maly Drama Theatre of St. Petersburg, Russia  
Directed and adapted by Lev Dodin

MAR 1—6

## RIMBAUD IN NEW YORK

Written and directed by Steve Cosson  
The Civilians  
Poems by Arthur Rimbaud translated  
by John Ashbery  
Produced by BAM with major support from  
the Poetry Foundation



Mariinsky Ballet in *A Tribute to Maya Plisetskaya* | Photo:  
Julieta Cervantes

FEB 24

BAM and Mariinsky present

## FOLK, FORM, AND FIRE: THE PROKOFIEV PIANO CONCERTOS

Mariinsky Theatre, St. Petersburg, Russia  
Conducted By Valery Gergiev

FEB 25—28

## A TRIBUTE TO MAYA PLISETSKAYA

Music by Pyotr Tchaikovsky  
Mariinsky Ballet  
Musical direction by Valery Gergiev

PROGRAM A, FEB 25

Featuring Diana Vishneva  
and Uliana Lopatkina

PROGRAM B, FEB 26

Featuring Uliana Lopatkina

PROGRAM C, FEB 27

Featuring Diana Vishneva

PROGRAM D, FEB 28

Featuring Uliana Lopatkina



*Edward Snowden* | Photo: Julieta Cervantes

BAM and WNYC present

## RADIOLOVEFEST

PRODUCED BY BAM AND WNYC

MAR 10

## WAIT WAIT... DON'T TELL ME!® NPR®

MAR 10

## INTO THE DEEP: THE MOTH AT BAM

MAR 11

## LAURA POITRAS AND EDWARD SNOWDEN

Interviewed by Brian Lehrer

MAR 11

## SELECTED SHORTS

MAR 12

## GARRISON KEILLOR: RADIO REVUE

# 2016 WINTER/SPRING SEASON



Sam Marks, David Tennant in *Richard II* | Photo: Richard Termine



*Les Fêtes Vénitiennes* | Photo: Jack Vartoogian



*La Verità* | Photo: Max Gordon



*DanceAfrica* | Photo: Richard Termine

MAR 12

## DEATH, SEX & MONEY

### FILMS IN BAM ROSE CINEMAS

MAR 11

#### SCREAM

Curated by Sean Rameswaram

MAR 12

#### A LEAGUE OF THEIR OWN

Curated by Molly Webster

### BAMCAFÉ LIVE

Curated by Terrance McKnight

MAR 11

#### PUBLIQUARTET

MAR 12

#### ADDI & JACQ

MAR 24—MAY 1

BAM, The Royal Shakespeare Company and  
The Ohio State University present

### KING AND COUNTRY: SHAKESPEARE'S GREAT CYCLE OF KINGS RICHARD II, HENRY IV PART I, HENRY IV PART II, HENRY V

Royal Shakespeare Company

APR 14—17

### LES FÊTES VÉNITIENNES

By André Campra  
Les Arts Florissants

Opéra Comique  
Conducted by William Christie  
Directed by Robert Carsen

APR 20 & 21

### CAETANO VELOSO & GILBERTO GIL

Two Friends, One Century of Music

MAY 4—7

### LA VERITÀ

Written and directed by Daniele Finzi Pasca  
Compagnia Finzi Pasca

MAY 11—JUN 12

### THE JUDAS KISS

Written by David Hare  
Directed by Neil Armfield

MAY 20—21

### YOUSSOU NDOUR

MAY 27—30

### DANCEAFRICA 2016

Senegal: Doors of Ancient Futures  
Artistic Director Abdel R. Salaam and Artistic  
Director Emeritus Chuck Davis  
Les Ballets de la Renaissance Africaine  
"WAATO SiITA"  
Compagnie Tenane  
Germaine Acogny  
Dyane Harvey  
Reverend Nafisa Sharriff  
BAM/Restoration DanceAfrica Ensemble

# Also on Stage



The Ingrid Bergman Tribute  
Created and written by Ludovica  
Damiani and Guido Torlonia  
In collaboration with Isabella Rossellini  
Directed by Guido Torlonia

Binge-Worthy Journalism  
with the creators of Serial:  
Sarah Koenig and Julie Snyder

Harry Shearer and Judith Owen's  
Christmas Without Tears  
(Does this Tree Make me Look Fat?)

American Fault Line:  
Race and the American Ideal—  
Ken Burns & Henry Louis Gates, Jr.  
in conversation with Michel Martin

Fran Lebowitz & Frank Rich:  
A Conversation on Art and Politics

BAM and Wordless Music present:  
Paul Thomas Anderson's  
Punch-Drunk Love

David Cross:  
Making America Great Again!

# BAM ROSE

BAM Rose Cinemas, screening first-run, independent, and foreign films, is a favorite destination for citywide cinephiles.

BAMcinématek is the only daily repertory film program of its kind in Brooklyn, with special guests augmenting its wide variety of series focusing on directors and curated themes. The annual BAMcinemaFest offers new films by emerging talent.

Audiences and revenue grew. More than 290,674 viewers attended films and events in total, generating \$3.3 million in ticket sales.

The cinemas also screened performances of the Met Live in HD, as well as National Theatre Live and Bolshoi Live productions from London, to about 6,000 viewers

# Cinemas

# BAM ROSE CINEMAS



*Star Wars Episode VII: The Force Awakens 3D* | Photo courtesy of Walt Disney Studios Motion Pictures



*The Witch* | Photo courtesy of A24



*Miles Ahead* | Photo courtesy of Sony Pictures Classics



*A Bigger Splash* | Photo courtesy of Fox Searchlight Pictures

## First-run Films

Star Wars Episode VII:  
The Force Awakens 3D

Love & Mercy

Irrational Man

Mistress America

Sicario

Spotlight

Oscar Live-Action Shorts

Hello, My Name Is Doris

Green Room

The Meddler

The Lobster

Dope

Straight Outta Compton

The Martian 3D

Chi-Raq

The Revenant

Midnight Special

Miles Ahead

Weiner

Me, Earl, and the Dying Girl

The End of the Tour

Grandma

Steve Jobs

Brooklyn

The Big Short

Where to Invade Next

Eye in the Sky

A Bigger Splash

The Neon Demon

Amy

Sleeping with Other People

Room

Carol

The Witch

Everybody Wants Some!!

Love & Friendship



# BAM ROSE CINEMAS

BAMCINÉMATEK



*Art Connect* | Caribbean Film Series | Photo courtesy of Miguel Galofré

Indie 80s

Animation Block Party

Found Footage Festival's  
Salute to Weirdos

Period Rohmer: The Marquise  
of O...and Other Films

Sneak Preview:  
Sleeping with Other People  
Leslye Headland and Alison Brie

Set It Off: LA Hip-Hop on Film

Sneak Preview:  
Time Out of Mind  
Richard Gere and Maria Cuomo Cole

The Apu Trilogy



*Ran* | Around the World in 5 Restorations | Photo courtesy of Orion Classics/Photofest

Ingrid Bergman at BAM

Overdue  
Nick Pinkerton and Nicolas Rapold

Caribbean Film Series:  
Better Mus' Come  
Storm Saulter

Stretch and Bobbito:  
Radio that Changed Lives  
Stretch Armstrong, Bobbito Garcia

Interesting Women,  
Interesting Lives

Sneak Preview: Taxi

Diaries, Notes, and Sketches:  
Cinematic Autobiography  
Rebecca Cleman, Jonas Mekas



*My Beautiful Laundrette* | Labour of Love: 100 Years of Movie Dates | Photo courtesy of Paramount Pictures/Photofest

The American Dreamer  
Lawrence Schiller

The Waking Dreams of Wojciech Has  
Anette Insdorf, Andrzej Krakowski

Sneak Preview: Brooklyn Behind  
The Mask: Bamboozled in Focus  
Spike Lee, Ashley Clark

The Unknown  
Steve Sterner

Out 1: noli me tangere

Entertainment  
Rick Alverson And Gregg Turkington

Turkey for Thanksgiving



*Black Girl* | Photo courtesy of New Yorker Films/Photofest

Chung Mong-Hong  
Chung Mong-Hong

Sneak Preview: 45 Years  
Andrew Haigh and Charlotte Rampling

Caribbean Film Series:  
Cristo Rey  
Leticia Tonos

A Married Woman

Sneak Preview:  
Where to Invade Next  
Michael Moore

Sneak Preview: Togetherness  
Jay And Mark Duplass

Heat & Vice:  
The Films of Michael Mann

# BAM ROSE CINEMAS

BAMCINÉMATEK



*A Woman Is a Woman* | An Evening with Anna Karina | Photo courtesy of Rialto/Photofest



*Imperial Dreams* | New Voices in Black Cinema | Photo courtesy of Netflix



*Thief* | Heat & Vice: The Films of Michael Mann | Photo courtesy of MGM/Photofest



*Working Girl* | Interesting Women, Interesting Lives | Photo courtesy of 20th Century Fox

Sneak Preview:  
Men Go to Battle

Valentine's Day: Sabrina

Witches' Brew  
Robert Eggers, Steve Sterner

Kino Polska:  
New Polish Cinema  
Kinga Debska And Filip Bajon

BAMcinématek Favorites:  
Gallic 60s

Migrating Forms  
Frances Stark, Britta Thie,  
Abbas Fahdel, Lonnie Van Brummelen,  
Siebren De Haan, James N. Kienitz Wilkins

A Bright Summer Day

Scream  
Presented by Sean Rameswaram

A League of Their Own  
Presented By Molly Webster

Caribbean Film Series:  
Art Connect  
Miquel Galofré

From the Third Eye:  
Evergreen Review on Film  
Manfred Kirchheimer

Chantal Akerman:  
Images Between the Images

Sneak Preview:  
Louder Than Bombs  
Joachim Trier

Cartel Land  
Matthew Heineman

New Voices in Black Cinema  
Lanre Olabisi, J.D. Stier, Malik Vitthal, Jamal  
Joseph, Sean Hodgkinson, Tahir Jetter, Iquo  
Essien, Wade Allain-Marcus, Jesse Allain-  
Marcus, Melissa Jones, Peter K. Hagen

An Evening with Anna Karina  
Anna Karina and Melissa Anderson

Labor of Love:  
100 Years of Movie Dates  
Moira Weigel, Leslie Jamison

Black Girl

FilmAfrica 2016  
Teddy Goitom, Benjamin Taft, Senay Berhe,  
Jason Silverman, Samba Gadjigo, Alexandra  
Sicotte-Levesque

Caribbean Film Series:  
Ayiti Mon Amour  
Guetty Felin

Fab Flicks:  
'70s Black Cinema

Kamikaze '89  
Regina Ziegler

Around the World in 5 Restorations

# BAM ROSE CINEMAS

BAMCINEMAFEST

*Films followed by special guests*

## OPENING NIGHT

Little Men  
Ira Sachs, Greg Kinnear,  
Theo Taplitz, Michael Barbieri

## CENTERPIECE

Weiner-Dog  
Todd Solondz, Ellen Burstyn

## SPOTLIGHT

In the Valley of Violence  
Ti West

## FEATURES

Joshy  
Jeff Baena, Alex Ross Perry

Suited  
Jason Benjamin, Lena Dunham,  
Jenni Konner

The Alchemist Cookbook +  
The Puppet Man  
Joel Potrykus

Author: The JT Leroy Story  
Jeff Feuerzeig and Laura Albert

Little Sister + Chekhov  
Zach Clark, Ally Sheedy, Addison Timlin

A Stray + Bisonhead  
Musa Syeed

Kate Plays Christine  
Robert Greene, Kate Lyn Sheil

Goat  
Andrew Neel, Ben Schnetzer

Another Evil + Jack  
Carson Mell

Fraud + A Meaning Full Life  
Dean Fleischer-Camp

Lo and Behold, Reveries of the  
Connected World

Slash  
Clay Liford

Spa Night  
Andrew Ahn

Newtown  
Kim A. Snyder, Deborah Roberts

Radio Dreams  
Babak Jalali

Shorts Program

The Childhood of a Leader  
Brady Corbet

Morris from America  
Chad Hartigan, Marquees Christmas

The Love Witch  
Anna Biller, Samantha Robinson,  
Jared Sanford

Tiny: The Life of Eric Blackwell +  
Streetwise  
Martin Bell

Collective Unconscious +  
Woman in Deep  
The Filmmakers

A Woman, a Part  
Elisabeth Subrin, Cara Seymour

Last Night at the Alamo  
Louis Black

Free Outdoor Screening:  
Kiki  
Sara Jordenö and cast

## CLOSING NIGHT

Dark Night  
Tim Sutton

# BAM ROSE CINEMAS

HD SCREENINGS



Anastasia Hille and Benedict Cumberbatch in *Hamlet* | Photo: Johan Persson

## NATIONAL THEATRE LIVE

National Theatre Live presents filmed performances of plays in high definition—broadcast via satellite from London’s National Theatre—to cinemas all over the world.

Hamlet  
Les Liaisons Dangereuses



*Lulu* | Photo: Met Opera

## THE MET: LIVE IN HD

The Met: Live in HD screened high-definition transmissions of the Met Opera’s famous repertory, featuring the world’s finest singers in thrilling live and encore performances. BAM presented pre-screening lectures led by opera experts at BAM Rose Cinemas.

Il Trovatore  
Otello  
Tannhäuser  
Lulu  
The Magic Flute  
Les Pêcheurs de Perles  
Turandot  
Manon Lescaut  
Madama Butterfly  
Roberto Devereux  
Elektra

# BAM café Live

Music from Brooklyn  
and the world





## 2015

### SEP

BRC30: BRC Orchestra Celebrates  
Jimi Hendrix and Band of Gypsies

Kendra Foster

Eco-Music Big Band: Sun Ra Opera  
and Celebration

### OCT

White Prism

Rob Reddy-Bechet: Our Contemporary

Raye 6

Narcissus & Song with Eleanor Friedberger

Co-presented by BAM and Onassis Cultural  
Center NY

Deborah Bond

Brazilian Samba Jazz Ensemble featuring  
Veronica Nunes & Ricardo Vogt

LEE

MILITIA VOX

### NOV

Audra Isadora

Tammy Scheffer Sextet

God's Unruly Friends

**BAMCAFÉ LIVE,**  
featuring free live  
music performances,  
drew 15,100 attendees.

REBELLUM—Burnt Sugar Arkestra's  
Avant Splinter Cell

Awesome Tapes from Africa (DJ Set)  
Presented in conjunction with  
World Music Institute

Gato Loco  
Presented in conjunction with  
World Music Institute

Akim Funk Buddha's Hip-Hop Holiday

### DEC

Matt Darriau's Paradox Trio

AMERICAN CANDY

Antoinette Montague

The GrooveBarbers' Acapella Holiday Show

Beat Kaestli

Anu~Sun

## 2016

### JAN

'Nuf Said

Clifton Anderson

Onaje Allan Gumbs' Trio Plus

Onaje Allan Gumbs and New Vintage

Mariami

Dina Regine

As Lolas

Akie Bermiss

### FEB

TAYE JOHNSON

Sugartone Brass Band

Tulivu and Seasoned Elegance

Gordon Chambers

SUGA BUSH

Def Stories

### MAR

The VeeVees

Faith

PUBLIQuartet (RadioLoveFest)

Addi & Jacq (RadioLoveFest)

Elisa Coia

Maritri & Soulfolk Experience

Morning Bound

Jessica Carvo

### APR

Grey Season

In collaboration with Berklee College of Music

Mimi Goese and Ben Neill

Marcus Machado

The New Cookers

The Frank Foster Project

EJ Strickland & Transient Beings

Jarana Beat

Co-presented with PEN American Center as part of  
PEN World Voices Festival

### MAY

The Academy Blues Project

Simi Stone

Ripe

In collaboration with Berklee College of Music

Matt Parker Trio

Late Night Dance Party with Tony Humphries

# BAM Hamm

The BAM Hamm Archives serves artists, historians, students, art aficionados, and audiences. The collection is particularly strong in documenting contemporary performance materials including photos, posters, playbills, press clippings, brochures, and audio visual materials. The archives also holds treasures dating back to the 1860s. The Iconic Artist Talks, a collaboration between the archives and Education & Humanities, featured Cheek by Jowl director Declan Donnellan, showcasing video and images in a discussion of his work at BAM.

The archives directs projects of institutional importance such as oral histories, creates displays and exhibits, and contributes to BAM publications including the BAM Blog.

Exhibits included a partnership with the Folger Shakespeare Library in Washington, DC, presenting an extraordinary exhibition of rare 16th-century quartos and other

artifacts in the Harvey Theater in conjunction with the Royal Shakespeare Company's engagement at BAM, King and Country.

With generous support from the Leon Levy Foundation, a digital repository has been created—the Leon Levy BAM Digital Archive. There, BAM's global audience can search a vast trove—newspaper clippings, programs, artist talks, performance video clips, and much more.

The archives also provides tours and educational programs. The collection is temporarily located at 1000 Dean Street in Crown Heights, Brooklyn and is open by appointment. Major support for the BAM Hamm Archives Center comes from Charles J. and Irene F. Hamm and the Leon Levy Foundation.

Talks, tours, exhibits, artifacts,  
and a vast Digital Archive

# Archives

# Trisha Digital



BAM Digital created original VR videos, hosted live conversations with artists on Facebook Live, launched new templates on BAM.org, and highlighted audience members on social media.

## NUMBERS

BAM.org 3,613,930 unique web sessions  
(4% increase from FY15)

f 127,514 followers  
(25% increase from FY15)  
1,604,112 video views.

t 128,742 followers  
(38% increase from FY15)

## HIGHLIGHTS

Produced 78 original videos, including:

Overview of Trisha Brown's *Set & Reset* featuring archival video from the BAM Hamm Archives and commentary by Trisha Brown scholar Susan Rosenberg

Live broadcast of Ken Burns and Henry Louis Gates Jr.'s *American Faultline*, a conversation about race in America, in partnership with PBS

Michael Mann talk—video of full discussion

Created BAM's first VR Videos, capturing scenes from *Opus*, *The Hard Nut*, and *La Verità* in 360°

Produced BAM's first Facebook Live talk with the female cast members of the Royal Shakespeare Company's *King & Country*, allowing audiences to engage with the performers in realtime

Partnered with *Time* Instagram photographer of the year Ruddy Roye to document DanceAfrica Bazaar attendees on Instagram

Highlighted Youssou NDOUR concert attendees with a portrait series in front of the opera house

Launched new Member Benefits section on BAM.org in conjunction with the new BAM Membership program

Launched a redesigned Next Wave Festival presence on BAM.org



55,133 followers  
(58% increase from FY15)



1,235,904 video views  
(31% increase from FY15)



# Education



BAM's Education programs reach 40,000 people annually.

The mission of BAM Education is to ignite imagination and ideas through programs that enrich the audience experience, spark conversation, and generate creative engagement.

BAM Education connects learning with creativity, engaging imagination by encouraging self-expression through in- and after-school arts education programming, workshops for students and teachers, school-time performances, and comprehensive school-break arts programs. Live performances include pre- and post-show activities led by 39 BAM teaching artists.

The BAM Professional Development Program provides professional development training and deeply discounted theater and rehearsal studio rentals to an annual selection of Brooklyn-based nonprofit arts organizations in order to build the foundations necessary for longterm success.



# BAMkids

## LIVE PERFORMANCES

**Legend Has It**  
Originally created by Rebecca Northan  
With Renee Amber, Bruce Horak, Mark Meer,  
Jamie Northan

**Feathers of Fire: A Persian Epic**  
Conceived, designed, and directed by Hamid  
Rahmanian | In collaboration with Larry Reed  
and ShadowLight Productions

**Carnival of the Animals**  
**Circa and QPAC's Out of the Box Festival**  
Created by Yaron Lifschitz and the Circa Ensemble  
Directed by Yaron Lifschitz

**Cinderella**  
Shona Reppe

**Poetry 2016: Past Is Present**

**TREE/BOOM/UMTHI**  
Magnet Theatre

## MOVIE MATINEES

The Gold Rush

The King and the Mocking Bird

The Nightmare Before Christmas

The Wizard of Oz

Disney Classic Cartoon Shorts

Singin' in the Rain

**18th Annual BAMkids Film Festival**  
in association with Northwest Film Forum and  
TIFF Kids International Film Festival™

The Iron Giant: Signature Edition

Safety Last!

Best of BAMkids Film Festival:  
Miffy the Movie + PAWO

Kirikou and the Wild Beasts

## SUMMER YOUTH PROGRAMS

**Creative Drama:**  
Exploring African Folktales

The Bard in Brooklyn

**Creative Writing**  
In partnership with Usdan Summer Camp for  
the Arts

**Animation Lab: Session 1**  
**Animation Lab: Session 2**  
In partnership with Museum of the  
Moving Image

**Musical Drama & Dance**  
In partnership with By All Means Save Some

## CONCERTS

H'sao

Sol y Canto

Jennifer Gasoi with  
Oran Etkin & Jon Samson

Chargaux

## READINGS

The Magical World of Strega Nona  
Tomie DePaola in conversation with  
Maria Russo



# Education

## LIVE PERFORMANCES

### Steel Hammer

Julia Wolfe and SITI Company | Bang on a Can

| Directed by Anne Bogart

### Legend Has It

Originally created by Rebecca Northan  
With Renee Amber, Bruce Horak, Mark Meer,  
Jamie Northan

### Feathers of Fire: A Persian Epic

Conceived, designed and directed by Hamid  
Rahmanian | In collaboration with Larry Reed  
and ShadowLight Productions

### Carnival of the Animals

Circa and QPAC's Out of the Box Festival  
Created by Yaron Lifschitz and  
the Circa Ensemble  
Directed by Yaron Lifschitz

### Cinderella

Shona Reppe

### Poetry 2016: Past Is Present

### Henry V

Royal Shakespeare Company

### The Famous Victories of Henry V

Royal Shakespeare Company

### DanceAfrica 2016

### TREE/BOOM/UMTHI

Magnet Theatre

## FILMS

### Black Panthers: Vanguard of the Revolution

### What Happened, Miss Simone?

### Little Rock Central: 50 Years Later

### Last Days in Vietnam

### Coming Home

### National Theatre Live: Of Mice and Men

### National Theatre Live: Treasure Island

## AFTER SCHOOL PROGRAMS

### Arts & Justice

### Fall Dance Insider

### Young Film Critics

### Dancing Into the Future

### Brooklyn Interns for Arts and Culture

## IN SCHOOL RESIDENCIES

### Shakespeare Teaches Students

### AfricanDanceBeat

### Brooklyn Reads

### Black Male Achievement Program

## PROFESSIONAL DEVELOPMENT

### Shakespeare Conference

### Shakespeare Teaches Teachers

### Introduction to Suzuki and Viewpoints



# Humanities

BAM Humanities is a forum for adventurous ideas, providing context for the cultural experience of BAM and beyond.

Talks, master classes, lecture and discussion series, and innovative literary programs facilitate engagement and discovery.

## TALKS

**Antigone Interpreted**  
 In conjunction with *Antigone*  
 With Bonnie Honig and Ellen McLaughlin  
 Moderated by Kaneza Schaal

A Program of the Brooklyn Book Festival  
 Co-Presented by BAM and the Onassis Cultural Center NY  
 Part of the Hellenic Humanities Program

**Antigone**  
 In conjunction with *Antigone*  
 With Juliette Binoche and company members  
 Moderated by Philip Gourevitch

Co-Presented by BAM and the Onassis Cultural Center NY  
 Part of the Hellenic Humanities Program

**BAM Gathering: 17 Border Crossings**  
 In conjunction with *17 Border Crossings*  
 With Thaddeus Phillips  
 Led by Bryan Doerries

**William Kentridge & Peter Galison**  
 In conjunction with *Refuse the Hour*  
 Moderated by Dennis Overbye

**On Truth (and Lies) in Suicide**  
 In conjunction with *Savannah Bay*  
 With Kay Redfield Jamison and  
 Andrew Solomon  
 Hosted by Simon Critchley

Co-Presented by BAM and the Onassis Cultural Center NY  
 Part of the Hellenic Humanities Program

**Anne Bogart & Julia Wolfe**  
 In conjunction with *Steel Hammer*  
 Moderated by Carl Hancock Rux

**BAM Gathering: Sancho: An Act of Remembrance**  
 In conjunction with *Sancho*  
 With Paterson Joseph  
 Led by Bryan Doerries

**BAM Gathering:  
 The Glory of the World**  
 Led by Bryan Doerries  
 In conjunction with *The Glory of the World*  
 With Charles Mee and Les Waters

**Into the Archives:  
 The Cherry Orchard**  
 In conjunction with *The Cherry Orchard*  
 With Ethan Hawke and David Hyde Pierce  
 Moderated by Sharon Lehner

**Talk: Rimbaud in New York**  
 In conjunction with *Rimbaud in New York*  
 With Steve Cosson and company members  
 Moderated by Violaine Huisman

**Gregory Doran with James Shapiro**  
 In conjunction with *King and Country:  
 Shakespeare's Great Cycle of Kings*

**A Look at the Stars:  
 Shakespeare and the Cosmos**  
 In conjunction with *King and Country:  
 Shakespeare's Great Cycle of Kings*  
 With Summer Ash of Columbia Astronomy  
 Public Outreach



### Shakespeare's Henriad

With James Shapiro and members of the Royal Shakespeare Company

Co-presented by BAM, The Shakespeare Society, and the Royal Shakespeare Company

### Facebook Live Chat: The Women of the RSC's Henriad

In conjunction with King and Country: Shakespeare's Great Cycle of Kings

With Leigh Quinn, Jennifer Kirby, and Evelyn Miller. Moderated by Owen Horsley

### Medea & Phaedra: Tragedies of Passion, Betrayal, and Revenge

Led by Bryan Doerries

With Elizabeth Marvel, Amy Ryan, Donnetta Lavinia Grays, and Bill Camp

## MASTER CLASSES

### Cloud Gate Dance Theatre of Taiwan

In conjunction with *Rice*

Co-presented by BAM and Mark Morris Dance Group

### Thaddeus Phillips

In conjunction with *17 Border Crossings*

Co-presented by BAM and Mark Morris Dance Group

### Compagnie du Hanne-ton

With Thi Mai Nguyen

In conjunction with *Tabac Rouge*

Co-presented by BAM and Mark Morris Dance Group

### Seán Curran Company

With Elizabeth Coker & company members  
Accompanied by Ustatshakirt Plus

In conjunction with *Dream'd in a Dream*

Co-presented by BAM and Mark Morris Dance Group

### Sankai Juku

With Semimaru

In conjunction with *Umusuna: Memories Before History*

Co-presented by BAM and Mark Morris Dance Group

### Souleymane Badolo

In conjunction with Yimbégré

Co-presented by BAM and Mark Morris Dance Group

### Urban Bush Women

In conjunction with *Walking with 'Trane*

Co-presented by BAM and Mark Morris Dance Group

### Dance with MMDG—All Ages

In conjunction with *The Hard Nut*

Co-presented by BAM and Mark Morris Dance Group

### Dance with MMDG—Adults

In conjunction with *The Hard Nut*

Co-presented by BAM and Mark Morris Dance Group

### Akram Khan

In conjunction with *Torobaka*

Co-presented by BAM and Mark Morris Dance Group

### Trisha Brown Dance Company

With Jamie Scott

In conjunction with *Trisha Brown Dance Company*

Co-presented by BAM and Mark Morris Dance Group

### Staging Non-Traditional Text

With Steve Cosson

In conjunction with *Rimbaud in New York*

Co-presented by BAM and Mark Morris Dance Group

### Embodying Shakespeare

With Owen Horsley, Alex Hassell, and Leigh Quinn

In conjunction with King and Country: Shakespeare's Great Cycle of Kings

Co-presented by BAM and Mark Morris Dance Group

### Behind the Scenes: King and Country

With Neil Kutner, Ryan Gastelum, Owen Horsley, and Ben Tyreman

In conjunction with King and Country: Shakespeare's Great Cycle of Kings



## PODCASTS

Produced by Tania Ketenjian  
for BAM

Curator's Notes  
With Joseph V. Melillo

Beyond Antigone  
With Anne Carson  
In conjunction with *Antigone*  
Co-Presented by BAM and the Onassis Cultural Center NY  
Part of the Hellenic Humanities Program

Beyond The Hard Nut  
With Mark Morris  
In conjunction with *The Hard Nut*

Beyond the 30th Celebration of  
Dr. Martin Luther King, Jr.  
With Walter Mosley, Nelson George,  
Angélique Kidjo, and Dr. Rudolph F.  
"Rudy" Crew  
In conjunction with *Brooklyn Tribute to Dr.  
Martin Luther King, Jr. 2016*

Beyond Rimbaud in New York  
With John Ashbery  
In conjunction with *Rimbaud in New York*

Beyond Physical Theater  
With Joseph V. Melillo, Sharon Lehner,  
and Duncan Wall  
In conjunction with *La Verità*

Beyond The Judas Kiss  
With Sir David Hare, Darryl Pinckney, and  
Liesl Schillinger  
In conjunction with *The Judas Kiss*

## UNBOUND

A Book Launch Series with BAM  
and Greenlight Bookstore

Elizabeth Gilbert with Sarah Jones  
Launch of *Big Magic: Creative Living  
Beyond Fear*  
Co-presented by BAM and Greenlight Bookstore

Bryan Doerries  
With Adam Driver, Bill Irwin, Gloria Reuben,  
and David Strathairn  
Launch of *The Theater of War: What Ancient  
Greek Tragedies Can Teach Us Today*  
Co-presented by BAM, Greenlight Bookstore, and the Onassis  
Cultural Center NY  
Part of the Hellenic Humanities Program

Sara Bareilles with Ben Folds  
Release of *Sounds Like Me: My Life  
(so far) in Song*  
Co-presented by BAM and Greenlight Bookstore

Gloria Steinem  
Launch of *My Life on the Road*  
Co-presented by BAM and Greenlight Bookstore

Elvis Costello with Roseanne Cash  
Release of *Unfaithful Music &  
Disappearing Ink*  
Co-presented by BAM and Greenlight Bookstore

Ben Rawlence in Conversation  
with K'naan  
Release of *City of Thorns*  
Co-presented by BAM and Greenlight Bookstore

## EAT, DRINK & BE LITERARY

Presented in partnership with  
the National Book Foundation

Marlon James  
Moderated by Lorin Stein

Eileen Myles  
Moderated by Alexander Chee

Darryl Pinckney  
Moderated by Deborah Treisman

Zadie Smith  
Moderated by Lorin Stein

Yiyun Li  
Moderated by Deborah Treisman

Karl Ove Knausgaard  
Moderated by Deborah Treisman

Sally Mann  
Moderated by Lorin Stein

Bill Clegg  
Moderated by Rebecca Mead

# Community



BAM's free programs reached more than 100,000 attendees

BAM organizes and hosts numerous community-oriented and free events. More than 100,000 people attended a variety of programs including the R&B Festival at MetroTech, Senior Cinema, community receptions in conjunction with mainstage performances, BAMboo! Halloween block party, the DanceAfrica bazaar, outdoor performances, exhibitions, film screenings, and the Annual Brooklyn Tribute to Dr. Martin Luther King, Jr., this year featuring Dr. Michael Eric Dyson.



## DANCEAFRICA BAZAAR

40,000 people visited this outdoor market celebrating DanceAfrica

## BLOCK PARTIES

### BAMBOO!

3,500 children and adults attended this Halloween celebration.

## COMMUNITY RECEPTIONS

Walking With 'Trane

The Hard Nut

Sancho

## ARTS IN THE GARDENS

New York Restoration Project (NYRP) and Brooklyn Academy of Music (BAM) partnered for the third year to present a season of free arts programming in four NYRP community gardens in Bedford-Stuyvesant and Williamsburg, Brooklyn. With the goal of raising awareness and further activating NYRP's wider network of public green spaces, the Arts in the Gardens series brings together communities to enjoy performing arts in a natural, outdoor setting. From June through September, the event series featured a diverse line-up of family-friendly events, including a Classic Movie Nights series featuring the work of Kirk Douglas and Sidney Poitier, plus dance and music performances, and a month-long art installation.

## COMMUNITY PERFORMANCES AND PARTNERSHIPS

### Fab Flicks

At Putnam Triangle Plaza in Clinton Hill, BAMcinématek, in partnership with FAB Alliance, presented five free outdoor screenings:

Mahogany

Cleopatra Jones

Claudine

Friday Foster

Shining Star:  
A Tribute to Maurice White

## LGBTQ EVENT

Everybooty: Pride Party  
Curated by Sean B, Sarah Jenny, Jason Roe, and Ricardo Osmondo Francis

Everybooty, on Pride weekend, is a basement-to-rooftop, more-is-more art-party with personalities from the queer art and nightlife worlds. Brooklyn's take on Pride, this radical evening of revelry fills the BAM Fisher with performances, DJs, installations, readings, booze, tarot, karaoke, and more. Featured guests included Amor Prohibido, Batala NYC, Bright Light Bright Light, Cecilia Gentili, Dick van Dick, Glenn Marla, Hi Fashion, Joseph Keckler, Lady Quesa'Dilla, Merrie Cherry, Nomi Ruiz, Rocky & Rhoda, Sasha Velour, and DJs Gant Johnson, Mister Wallace, and Xanadude (DJ Sean B and DJ Deputy).





## R&B FESTIVAL AT METROTECH

This free annual outdoor summer concert series, attended by 18,000, features an eclectic roster of trailblazers and emerging musical visionaries of R&B and world music. These lunchtime performances are held at MetroTech Commons, located at the corner of Flatbush and Myrtle Avenues in Downtown Brooklyn.

Zapp

William Bell and Band  
Featuring John Leventhal

Mali Music

The Fat Afro Latin Jazz Cats

George Gray Groove Coalition  
Featuring Jazzmeia Horn

The Fatback Band

King Sunny Adé

The Hallelujah Train featuring  
Pastor Brady Blade Sr., Daniel Lanois,  
Brian & Brady Blade Jr. & more  
Co-presented with Lincoln Center Out of Doors

Ladies Sing the Blues  
featuring Catherine Russell,  
Charenee Wade, and Brianna Thomas

Dee Dee Bridgewater with Theo  
Croker's DVRK Funk

## 30TH ANNUAL BROOKLYN TRIBUTE TO DR. MARTIN LUTHER KING, JR.

BAM annually celebrates the memory of Dr. Martin Luther King, Jr. with a free event filled with music, film, art, and moving tributes from esteemed speakers and local community leaders.

### MASTER OF CEREMONIES

Brooklyn Borough President Eric L. Adams

### KEYNOTE SPEAKER

Dr. Michael Eric Dyson

### MUSICAL GUESTS

Kimberley Nichole  
The Brooklyn Interdenominational Chorus

### FILM SCREENING

The Black Panthers:  
Vanguard of the Revolution

### COMMUNITY ART EXHIBITION

Picture the Dream

## SENIOR SOCIALS

Jazz Swing and Motown

## SENIOR CINEMA

BAM Senior Cinema is a free monthly film series (with free popcorn and soda) for community members ages 65 and older, serving approximately 2,800 seniors in the community annually.

Black Orpheus

Dirty Dancing

Freedom on My Mind

Kramer vs. Kramer

Moonstruck

Operation Petticoat

The Bad Seed

The Last Dragon

The Secret in Their Eyes

The Warriors

To Sir, with Love

The King and I

Friday Foster

An American in Paris

Cooley High

Hush... Hush, Sweet Charlotte

Double Indemnity

The Preacher's Wife

# Dance Motion USA<sup>SM</sup>

Cultural diplomacy,  
changing lives worldwide



## DANCEMOTION USA<sup>SM</sup>

Completing its fifth season, DanceMotion USA<sup>SM</sup>—BAM’s cultural diplomacy partnership with the Bureau of Educational and Cultural Affairs of the US Department of State— sent three of America’s finest contemporary dance companies on month-long outreach programs to facilitate cross-cultural exchange and mutual understanding. Through workshops, master classes, artist talks, creative collaborations, and performances, the companies shared their artistic skills and viewpoints while experiencing the host countries’ cultural offerings.

Highlights this year include Dance Heginbotham’s residencies in Indonesia, Laos, and the Philippines where they worked with blind and deaf students, and a disabled women’s center continuing work in connection with the 25th anniversary of the Americans

with Disabilities Act (ADA). In addition to holding workshops with dance progressions, youth, and disabled groups in Madagascar, South Africa, and Zambia, Limón Dance Company shared performance stages with local dance groups and created collaborative works.

In addition to direct personal contacts, DanceMotion USA<sup>SM</sup> has built an active, engaged community of people who are interested in dance throughout the globe. There are over 190,000 people from over 150 countries actively following our activities.

## 2016 RESIDENCY

Dance Heginbotham (NYC)  
Indonesia, Laos, the Philippines

Limón Dance Company (NYC)  
Madagascar, South Africa, Zambia

## PILOT FOLLOW-ON PROFESSIONAL DEVELOPMENT PROGRAM

In Summer 2016, five New York-based and international artists participated in a two-week Professional Development Program (PDP) in conjunction with BAM Education and Creative Capital. International participants (nominated by artistic directors of Dance Heginbotham and Limón Dance Company) were artists and arts managers from Indonesia, Laos, Madagascar, and Zambia. The group took part in Creative Capital’s Summer Intensive, which included four days of hands-on, professional development workshops—business planning, strategic and visibility marketing, social media, and mission building. Then the group toured cultural spaces, went to open rehearsals with DMUSA alumni including Mark Morris Dance Group and Seán Curran Company, participated in roundtable discussions, and visited Jacob’s Pillow Festival.



# Visual Art

Exhibitions, installations,  
performances, and more



## BAMBILL COVER ARTISTS

### 2015 NEXT WAVE FESTIVAL

Shinique Smith

Sep & Dec—*Abiding Light*, 2015

Oct—*Beautiful Dreamer*, 2015

Nov—*Magnetic Beam*, 2015

Archival inkjet print, 22" x 30",  
courtesy of the artist

### 2016 SPRING SEASON

Elizabeth Murray

*If Only Cup*, Oct 1997—Jan 1998,  
oil on canvas and plywood, 68" x 72".

Photograph by Tom Barratt, courtesy  
Pace Gallery. © The Murray-Holman  
Family Trust / Artist Rights Society (ARS),  
New York, courtesy of Pace Gallery, New York

## FALL 2015

### NEXT WAVE ART | EVENTS

*We of Me: Molly Surno*

Performance by Molly Surno | Lepercq Space  
Co-produced by BAM and Recess

*Next Wave Art Opening Reception*

With performance by Shinique Smith, in  
collaboration with Marisa Arriaga and  
Gary Pennock | Peter Jay Sharp Building,  
BAM Harvey Theater, and BAM Fisher

*When Art and Technology Collide:*

*Oraculetang* | Interactive installation by Oleg  
Kulik and discussion with Dmitry Volkov of  
SDVentures | Lepercq Space

### NEXT WAVE ART | EXHIBITIONS

*Jamison Brosseau, Jaqueline Cedar, Matt  
Miller, Evan Robarts, Rachel Selekman, Talia  
Shulze, Justin Orvis Steimer, Anne Vieux*  
Diker Gallery Café and Natman Room

*Lucy Kim* | Dorothy W. Levitt Lobby

*Duhirwe Rushemeza* | BAM Fisher Lobby

*Cryptophasia* | *Lisa Gwilliam & Ray Sweeten*  
BAM Fisher Lobby

*David Samuel Stern: Woven Portraits*  
BAM Harvey Theater

## SPRING 2016

### EXHIBITIONS

*Heart & Mind* | Elizabeth Murray  
Natman Room, Diker Gallery Café,  
Levitt Lobby | Presented by Pace Gallery  
and BAM, in collaboration with Trisha Brown  
Dance Company

*The Arch of My Eye's Orbit* | Anila Quayyum  
Agha, Kamrooz Aram, Kameelah Janan  
Rasheed, and Slavs and Tatars | Curated  
by Hrag Vartanian | Natman Room, Diker  
Gallery Café, Levitt Lobby, BAM Fisher

*Social Action: BAM and the Civil War*  
Natman Room

## SPECIAL PROJECTS AND EVENTS

Shinique Smith Limited Edition Prints  
Editions/Artists Book Fair | The Tunnel, NYC

2016 BAM Art Auction  
Online auction  
Closing Party at Bridget Donahue

# Membership

A photograph of two women smiling at a party. The woman on the left has curly hair, wears a gold crown, a white fuzzy top, and a maroon bag. The woman on the right has long dark hair, wears glasses, a blue hat, and a grey cardigan, holding a fan. The background is a dimly lit party with string lights and other people.

BAM's membership program offers an enticing variety of access



## BAM MEMBERSHIP

BAM members are some of the most passionate and dedicated arts supporters in New York City. BAM Membership unites enthusiasts who support the diverse and adventurous arts that can only be seen at BAM. Members receive an array of live performance benefits including members-only advance ticket access, same-day discounts for live performances, waived ticket handling fees, and invitations to exclusive events. This year's events included rehearsals of Les Arts Florissants' *Les Fêtes Vénitiennes*, conducted by William Christie, and dance icons Wendy Whelan and Jack Soto in a reimagining of Japanese Noh theater classic *Hagoromo*. Plus, members helped kickoff the 2015 Next Wave Festival with the first annual BAM Member Bash, featuring an exclusive performance from Bang on a Can's radical street band Asphalt Orchestra.

Membership also supports BAMcinématek—BAM's daily year-round repertory film program—and new release films at BAM Rose Cinemas. Level 1-3 members receive 50% off regular-price movies and Level 4-5 members attend films for free. Other cinema benefits include priority access and discounts for special screenings, including BAMcinemaFest, and invitations to free monthly Curator's Choice screenings. This year members enjoyed a members-only sneak preview of John Crowley's adaption of Colm Tóibín's Man Booker Prize shortlisted *Brooklyn*, and an exclusive screening of Jean-Luc Godard's *A Woman Is a Woman* featuring a Q&A with French cinema icon and star Anna Karina.

## THE BAM PATRON PROGRAM

BAM Patrons are as extraordinary as the work they champion. Patron Program support starts at \$1,500, and members receive a host of VIP privileges, including personalized ticket handling and concierge service through BAM Patron Services, access to the donor lounge, free admission for two to films at BAM Rose Cinemas, and invitations to hallmark events at each level of giving. This year, Patrons were offered a selection of Producers Council Dinners, paired with a premier Next Wave Festival performance. The Chairman's Circle Dinner featured an homage to Salvador Dalí from the Swiss circus troupe Compagnia Finzi Pasca, and the annual Next Society celebration, hosted by The River Café, honored the Royal Shakespeare Company's six-week King and Country residency at BAM.

## THE BAM ARTIST CIRCLE

The Artist Circle is a core group of BAM supporters who champion BAM's mission to be the home of adventurous artists, audiences, and ideas with an annual commitment of \$10,000. Artist Circle members mingle with artists at intimate gatherings in private homes or spectacularly unique settings. This year guests of honor included Juliette Binoche and Rupert Everett.

## IDNYC

IDNYC is a government-issued ID card that provides cardholders with one year of complimentary BAM Membership. IDNYC participation in new BAM Membership was an enormous success—with more than 17,000 New Yorkers signing up in this period. BAM is one of the performing arts institutions attracting the highest number of members in the city. In this span, 65% of the IDNYC members were new to BAM's records, which has validated a benefit structure that removes barriers to attendance.

# Who We Are





# BAM BOARD

Year ending June 30, 2016

## **BAM BOARD CHAIR**

Alan H. Fishman

## **BAM BOARD VICE CHAIRS**

William I. Campbell

Adam E. Max

## **PRESIDENT**

Katy Clark (voting trustee)

## **SECRETARY**

Joseph V. Melillo

## **TREASURER**

James I. McLaren

## **PRESIDENT EMERITI**

Karen Brooks Hopkins

Harvey Lichtenstein

## **MEMBERS**

Jonathan S. Auerbach

Tony Bechara

Fran Bermanzohn

Gordon Bowen

Linda Chinn

Henry Christensen III

Pamela A. Codispoti

Dr. Rudolph F. Crew

David E.R. Dangoor

Cheryl Della Rosa

Dinyar S. Devitre

Mark Diker

Andre Dua

Brendan J. Dugan

Thérèse Esperdy

Teri Everett

Mallory Factor

Richard E. Feldman, Esq.

Steven G. Felsher

Jeanne Donovan Fisher

Barry M. Fox

MaryAnne Gilmartin

Robert M. Greenberg

Anoushka Healy

G. Penn Holsenbeck

Anne Hubbard

Grant S. Johnson

Daniel A. Klores

Philippe Krakowsky

Edgar A. Lampert

Gary Lynch

Patricia E. Michels

Ahrin Mishan

Donald R. Mullen Jr.

William A. Perlmuth

David L. Pickett

Frances A. Resheske

Sarah C. Robertson

Jonathan F.P. Rose

Anna Kuzmik Sampas

Alberto Sanchez

Timothy Sebuya

Bartholomew A. Sheehan III

Jessica Smith

Brian Stafford

Axel Stawski

Joseph A. Stern

Pedro J. Torres

John L. Usdan

Brigitte Vosse

Nora Ann Wallace

Veronica Westberg

Adam Wolfensohn

Claire Wood

Andrew Zolli

## **EX OFFICIO**

Gina Argento

Lori Luis

Laura Popa

## **CHAIRMEN EMERITI**

Neil D. Chrisman

Seth S. Faison

Bruce C. Ratner

## **HONORARY TRUSTEES**

Robert L. Forbes

Charles J. Hamm

Barbara B. Haws, C.A.

William Josephson

Mary Kantor

John Lipsky

Laurie Mallet

Cathy-Ann Martine-Dolecki

David L. Ramsay, M.D., M.Ed.

Elaine Weinstein

Hon. Franklin R. Weissberg

Vaughn C. Williams, Esq.

# BAM SUPPORTERS

## \$500,000

brigittenyc  
Brooklyn Borough President's Office—Eric Adams  
JPMorgan Chase & Co.  
The City of New York—Bill de Blasio, Mayor  
Jeanne Donovan Fisher  
Judith R. & Alan H. Fishman  
Howard Gilman Foundation  
Diane & Adam E. Max  
The Andrew W. Mellon Foundation  
The New York City Council—Brooklyn Delegation  
The New York City Council – Laurie A. Cumbo  
The New York City Council—Melissa Mark Viverito,  
Speaker  
New York City Department of Cultural Affairs  
New York City Economic Development Corporation  
The SHS Foundation  
Jessica E. Smith & Kevin R. Brine  
Ronald P. Stanton  
United States Department of State, Bureau of  
Educational and Cultural Affairs  
The Robert W. Wilson Charitable Trust  
Anonymous

## \$250,000

American Express  
William I. Campbell & Christine Wächter-Campbell  
Doris Duke Charitable Foundation  
First New York Partners Management  
Goldman Sachs Gives at the recommendation of Anne  
Hubbard & Harvey Schwartz  
Jerome L. Greene Foundation  
Leon Levy Foundation  
Donald R. Mullen Jr.  
The Wall Street Journal

## \$100,000

Altman Foundation  
Bank of America  
Frances Bermanzohn & Alan Roseman  
Bloomberg Philanthropies  
Booth Ferris Foundation  
Carnegie Corporation of New York  
The Gladys Kriebel Delmas Foundation  
Delta Air Lines  
Aashish & Dinyar Devitre  
Doris Duke Foundation for Islamic Art  
Robert and Mercedes Eichholz Foundation  
Thérèse M. Esperdy & Robert G. Neborak  
Forest City Ratner Companies  
Agnes Gund  
Charles J. & Irene F. Hamm  
The Harkness Foundation for Dance  
The Francena T. Harrison Foundation Trust  
The Rita and Alex Hillman Foundation  
Stephanie & Timothy Ingrassia  
The Kovner Foundation  
Robin & Edgar Lampert  
The Lepercq Charitable Foundation

Toby Devan Lewis  
James I. McLaren & Lawton W. Fitt  
New York State Council on the Arts  
Pepsi-Cola Bottling Company of New York  
The Jerome Robbins Foundation, Inc.  
Jonathan F.P. & Diana Calthorpe Rose  
The Fan Fox & Leslie R. Samuels Foundation, Inc.  
Bernard Selz  
The Shubert Foundation, Inc.  
Joseph and Sylvia Slifka Foundation  
The Joseph S. and Diane H. Steinberg Charitable Trust  
Joseph A. Stern  
Time Warner Inc.  
John L. & Eva Usdan  
Nora Ann Wallace & Jack Nusbaum  
Anonymous

## \$50,000

Jody & John Arnhold  
Linda & Adam Chinn  
Con Edison  
Mr. & Mrs. Henry Christensen III  
Ide & David Dangoor  
Della Rosa Family Foundation  
Beth Rudin DeWoody  
Barry M. Fox  
Gotham Organization, Inc.  
The Florence Gould Foundation  
Barbara Haws & William Josephson  
Frederick Iseman  
Alan Jones & Ashley Garrett  
Kate Spade  
The Emily Davie & Joseph S. Kornfeld Foundation  
Gary Lynch & Kate Hall  
Grace Lyu-Volckhausen  
Pierre and Tana Matisse Foundation  
MetLife Foundation  
The Ambrose Monell Foundation  
Henry and Lucy Moses Fund, Inc.  
National Endowment for the Arts  
The Barbro Osher Pro Suecia Foundation  
Norman & Liliane Peck  
Poetry Foundation  
William & Katherine Rayner  
Sarah & Spencer Robertson  
Rockefeller Brothers Fund  
May and Samuel Rudin Family Foundation, Inc.  
Anna Kuzmik Sampas & George Sampas  
Santander  
The Morris and Alma Schapiro Fund  
Jennifer Small & Adam Wolfensohn  
Mr. & Mrs. Howard Solomon  
Edward & Virginia Spilka  
Brian Stafford  
Starry Night Fund  
Axel Stawski & Galia Meiri Stawski  
Target  
Pedro Jose Torres & Cecilia Picon  
Virginia B. Toulmin Foundation  
Viacom  
Joseph LeRoy & Ann C. Warner Fund  
The Winston Foundation, Inc.  
Anonymous

## \$25,000

Roger Alcaly & Helen Bodian  
Jonathan & Jessika Auerbach  
BNY Mellon  
Anne H. Bass  
Tony Bechara  
Car2go  
Charles Hayden Foundation  
Jim Chervenak  
Citi Foundation  
Pamela Codispoti & Mark Habner  
Crown Acquisitions  
Constans Culver Foundation  
Davis Polk & Wardwell  
The Dermot Company, Inc.  
Mark Diker & Deborah Colson  
Andre & Stephanie Dua  
Epstein Teicher Philanthropies  
Steven & Susan Felsher  
The Grand Marnier Foundation  
Hasty Pudding Institute of 1770  
Penn & Diane Holsenbeck  
Daniel Clay Houghton  
Grant Johnson  
Miriam Katowitz & Arthur Radin  
Dan & Abbe Klores  
Kohn Pedersen Fox Associates PC  
Phillippe & Posey Krakowsky  
Robert & Teresa Lindsay  
The Frederick Loewe Foundation, Inc.  
McKinsey & Company  
Mertz Gilmore Foundation  
National Grid  
New York State Office of Parks, Recreation and Historic  
Preservation  
Paul, Weiss, Rifkind, Wharton & Garrison  
The Pinkerton Foundation  
Gabriel & Lindsay Pizzi  
Renova  
Rubin Fortunato & Harbison P.C.  
Bette & Richard Saltzman  
Savoy Trading Limited  
Shearman & Sterling LLP  
Bartholomew A. Sheehan & Sheila A. Cain  
Sidley Austin LLP  
Skadden, Arps, Slate, Meagher & Flom LLP  
In Memory of Robert Sklar  
Sam & Ellen Sporn  
The Harold and Mimi Steinberg Charitable Trust  
Taipei Cultural Center of TECO in New York  
Toll Brothers City Living  
Robert L. Turner  
Williams & Connolly LLP  
Anonymous

## \$10,000

Arthur F. & Alice E. Adams Charitable Foundation  
The Aeroflex Foundation  
Allen & Overy LLP  
American Friends of Les Arts Florissants  
Ameriprise Financial

Allan Arffa & Kay Matschullat  
David Ashen  
Rose M. Badgeley Residuary Charitable Trust  
The Barker Welfare Foundation  
The Bay and Paul Foundations  
The Howard Bayne Fund  
Catrina Bentley & Carey R. Ramos  
Norman S. Benzaquen  
Brook & Roger Berling  
Paula & Earl Black  
Mr. & Mrs. Tony Bowe  
Broadway Stages  
Brooklyn Daily Eagle  
The Brooklyn Brewery  
Cahill, Gordon & Reindel LLP  
Calvin Klein Inc.  
Donald A. Capocica  
Mark Diker & Deborah Colson  
Causemedia Group  
Goldman Sachs Gives at the direction of R. Martin  
Chavez  
Natasha Chefer  
Credit Suisse  
Suzy & Anthony Davis  
Elizabeth De Cuevas  
Beatrice & James Del Favero  
Barbaralee Diamonstein-Spielvogel & Ambassador Carl  
Spielvogel  
Jean and Louis Dreyfus Foundation, Inc.  
Carol & Roger Einiger  
Mallory & Elizabeth Factor  
Linda & Martin Fell  
Estate of Richard B. Fisher  
Fribourg Family Foundation  
MaryAnne Gilmartin  
Elaine Golin  
Good Candle  
Marian Goodman Gallery  
Goodwin Procter LLP  
Pamela Grace  
The Green Fund Inc.  
Robert M. Greenberg & Corvova Choy Lee  
The William and Mary Greve Foundation  
The Marc Haas Foundation, Inc.  
Mr. & Mrs. Burton K. Haimes  
Peter & Beth Hammack  
The Jim Henson Foundation  
Cheryl Henson & Ed Finn  
The DuBose and Dorothy Heyward Memorial  
Foundation  
Sophie Hughes  
David & Debra Humphreys  
Will & Prattana Kennedy  
Alexander E. Kipka & Katherine Nintzel  
David L. Klein, Jr. Foundation  
Kameron M. Kordestani  
Joan Kreiss  
Eileen M. Lach  
Solange Landau  
The Bertha and Isaac Liberman Foundation  
John Lipsky & Zsuzsanna S. Karasz  
The Lupin Foundation  
M&T Bank  
Magnolia Pictures  
David & Susan Marcinek

Donna Marshall & Lee Marshall  
Scott C. McDonald  
William Patrick McMullan & Rachel McPherson  
Medgar Evers College Gifts and Grants  
Edward S. Moore Foundation  
Barbara & Richard Moore  
Morgan Stanley  
Dianne Abeloff & Sanford Nager  
New York City Council – Brad Lander  
New York City Department for the Aging  
NYC Health Department  
New York State Assembly – Walter T. Mosley  
The O'Grady Foundation  
Joey O'Loughlin  
O'Melveny & Myers LLP  
Michael Palm Foundation  
Stephen Palmese  
Laura Pels International Foundation for Theater  
Donald A. Pels Charitable Trust  
Pfizer Inc.  
Lyon & Hilary Polk  
Cynthia & Leon Polsky  
Daniel Porter & Melanie Judd  
Marcel Przymusinski  
The Reed Foundation  
Frances A. Resheske  
Richenthal Foundation  
William D. & Susan Kahan Rifkin  
Max Rifkind-Barron  
The River Café  
Mr. & Mrs. Theodore C. Rogers  
Martha A. & Robert S. Rubin  
Thomas & Georgina Russo  
Alberto Sanchez & Sonia Vela  
The Scherman Foundation, Inc.  
Saul & Devorah Sherman Fund  
Timothy & Julie Sebuya  
The Evelyn Sharp Foundation  
Amy Sherman-Palladino  
Sills Family Foundation  
Susan & Larry Sills  
Simon Sinek  
Jean Stein  
William & Anne M. Tatlock  
Thomson Reuters  
Thomas & Christine Tormey  
Trust for Mutual Understanding  
Wendy vanden Heuvel  
White & Case LLP  
Wilmer, Cutler, Pickering, Hale & Dorr  
Carol Yorke & Gerard Conn  
Barbara & David Zalaznick  
Pia & Jimmy Zankel  
Anonymous (2)

## \$5,000

Linda & Max Addison  
Takís C. Anoussis  
David Bank & Jason R. Stone  
Nathaniel Beck & Karen Hackett  
Alan & Leslie Beller  
JJ & Michelle Berney  
Elaine S. Bernstein  
The Bloomingdale's Fund of the Macy's Foundation  
CBRE  
Steven & Alexandra Cohen Foundation  
Timothy & Carol Cole  
Crunch  
Cory Cruser & Dani Lescano  
Joan K. Davidson (The J.M. Kaplan Fund)  
Peter Davidson & Drew McGhee (The J.M. Kaplan Fund)  
Daniel Doctoroff  
The Max and Victoria Dreyfus Foundation, Inc.  
Lisabeth During & Ross Poole  
Violet & Christopher Eagan  
Henry & Kathy Elsesser  
FACE  
Britton & Melina Fisher  
Barbara G. Fleischman  
Fleurs Bella  
Flocabulary  
Mr. & Mrs. Austin T. Fragomen, Jr.  
Laurie Garrett  
Ann and Gordon Getty Foundation  
John N. & Gillett A. Gilbert  
Shellie Gillespie  
Beth & Gary Allen Glynn  
Parisa Golestaneh  
Great Performances  
Peter & Monika Greenleaf  
The Grodzins Fund  
Henry B. & Karoly S. Gutman  
Scott & Ellen Hand  
HarperCollins Publishers  
John & Samantha Hunt  
Hutchins Family Foundation Inc.  
Scott & Viktoriia Irwin  
Mark Jackson & Karen Hagberg  
Japan Foundation  
Julian Price Family Foundation  
Christoph & Flora Kimmich  
Kusmi Tea  
Marion Leydier  
Christopher Li Greci & Robert Ohlerking  
The Liman Foundation  
Briehan Lynch & Alexander Evis  
Anne Maltz  
Jan Marks  
Mattis Family Foundation  
Constance & H. Roemer McPhee  
Joyce F. Menschel  
Richard & Ronay Menschel  
Virginia & Timothy Millhiser  
Michele Mirman  
Moët Hennessy USA  
Moody's Investor Service  
Munger, Tolles & Olson LLP  
NAON, Inc  
Charles M. Nathan & Alisa F. Levin  
Linda & Stuart Nelson  
New York State Assembly – Joseph R. Lentol  
New York State Education Department  
Michael Newhouse

William & Louisa Newlin  
Jim & Mary Ottaway  
Michael Perkinson  
Diana & Gene Pinover  
Rajika & Anupam Puri  
Bradley Radoff  
Rolex SA  
Donald & Shelley Rubin  
James & Elizabeth Ryan  
S&P Global  
Milton T. Schaeffer  
Sarah I. Schieffelin Residuary Trust  
Olatokumbo & Sheethal Shobowale  
Melanie & Joseph Shugart  
Alfred & Stephanie Shuman  
Ellynn Skove  
SL Green  
Tom & Wendy Stephenson  
Stop & Stor Charitable Fund  
TD Charitable Foundation  
Michael M. Thomas  
Jane & Robert Toll  
Teresa Tsai  
Michael Tuch Foundation, Inc.  
Susan Unterberg  
The Weininger Foundation, Inc.  
Nathaniel White  
Walter & Donna Wick  
Elisabeth & Robert G. Wilmers  
Richard Winger  
Nina Winthrop  
Carolyn T. Ellis & H. Lake Wise  
Cynthia Young & George Eberstadt  
Anonymous (2)

## \$2,500

Donald Allison & Sumiko Ito  
Mark Allison & Stephanie Holmquist  
Mark Almeida & Theresa Galvin  
The American Chai Trust  
Frank & Mary Ann Arisman  
Peter Balis & Brian Goldston  
Alexandra Ballard  
Leah & Benjamin Barber  
Wilhelmina Barker  
Katie Barthmaier & Brent Buck  
Jayne H. Baum  
Mickey & Martin Baumrind  
Denise Bernardo & Eddie Muentes  
Alison Blood  
Jill & Sheldon Bonovitz  
Dr. & Mrs. Jeffrey S. Borer  
Gordon Bowen  
Amanda Brainerd  
Dominique Bravo & Eric Sloan  
Virginia Brody  
Andrew D. Brown  
Sol W. & Hermina Cantor Foundation  
Carolina Carvalho-Cross & Spencer Cross  
Lisa Chanel  
David Chenkin  
Jean Churchill  
Ranny Cooper & David Smith  
The Aaron Copland Fund for Music, Inc.  
The Corinthian Foundation  
Breukelein Institute/Dennis Corrado  
The Cowles Charitable Trust

The Criterion Collection  
Sebastian Cucullu  
Katherine Cunningham & Christopher Dixon  
Ellen & John Curtis  
Karen Dauler & Gaston Silva  
Judith N. Davis  
DeLaCour Family Foundation  
Martha DeRight & Erich Bechtel  
Brooke Devine  
Diana Diamond & John Alschuler  
Frederick N. & Michele Oka Doner  
Pamela N. Drexel  
Sarah & Alistair Dunn  
Dwight W. & Ann C. Ellis  
Cristina Enriquez-Bocobo & Cody J. Smith  
Entube  
Gail Erickson & Christa Rice  
Ernst & Young LLP  
Seth & Sara Faison  
Fiona & Harvey Fein  
Nathaniel Felsher  
Katherine & Luke Fichthorn  
David W. & Elizabeth P. Fitts  
Flanders House  
Friars Foundation  
Eleanor F. Friedman  
Susan Frunzi  
Dennis Furbush  
Lynn Gilbert  
Walter Gilbert  
Amy Kern & John M. Goldsmith  
Rhonna & Ezra Goodman  
Hayley Gorenberg & George Sands  
Gordon Gould  
Larry E. Dumont, M.D. & Martin Gould  
Francis Greenburger & Isabelle Autones  
Cynthia Hammond & Joseph Samulski  
Joyce & Ira Haupt II  
Justin Haythe & Muriel Soenens  
Joanna Hedge  
Diana Rhoten & John Heilemann  
Molly Heines & Thomas Moloney  
Adam & Sita Hess  
Dr. Arlene Heyman, MD  
Pamela J. Hoiles  
John & Karen Horn  
Richard Hulbert  
Jill Hunter  
IFC  
Stacy-Marie Ishmael  
Beth Jacobs & Dr. Keith Gottesdiener  
David & Amy Jaffe  
Douglas Jaffe & Kristin Heavey  
Donna & Carroll Janis  
Randy & Mill Jonakait  
Julia Kahr & Brian Colton  
Mary Kantor  
Susan B. Kaplan and Nancy & Mark Belsky  
Philip Kearns & Sid Ray  
Alexander Kent  
Helen Kim-Bordes  
Susan Holland & Richard Klein  
Alan & Susan Kolod  
Thomas Koveleskie  
Jay Kriegel & Kathryn McAuliffe (Tides Foundation)  
The Mark Krueger Charitable Fund  
Liz & George Krupp  
Midrag Kukrika  
Edward & Phyllis Kwalwasser  
Hugh & Betsy Lamle Foundation

Raymond Learsy  
Helena Lee & Richard Klapper  
Roseanne Legrand  
Jonathan E. Lehman  
François & Calleen Letacconoux  
Carol & Joel Levy  
John N. Lieber & Amy J. Glosser  
Simon Lipskar & Kate Zuckerman  
Susan Lorence  
Reed Lowenstein & Melanie Hanan  
Richard Lynn & Joseph Evall  
Dianne Mackenzie  
Anne Mackinnon  
James R. Marshall  
John Martinez & Andrea Bozzo  
Marc Mathieu  
Nina Matis  
Deborah McAlister & Christopher Jones  
Ethan & Sarah McCarty  
Peter & Denise McCormick  
Sharon & Curtis Mechling  
Joseph V. Melillo  
Metropolitan New York Library Council  
Julia & Tom Michael  
Diane Compagno Miller  
Louis Mintz & Beverly Crilly  
Marsha & Darcy Miro  
The Netherland-America Foundation  
New England Foundation for the Arts' National Dance Project  
New York City Council – Stephen Levin  
New York State Assembly – Annette Robinson  
New York State Assembly – Helene Weinstein  
Linda Nochlin Pommer  
NYC Department of Youth and Community Development  
Bianca Maria Orlando & William McGinty  
Jane Ormerod & Peter Darrell  
John Perkins & Hope Dana  
Bill & Patty Dugan Perlmut  
Marnie S. Pillsbury  
Aleksey Pryadko  
Peter & Susan Restler  
John & Diana Rice  
The Rockefeller Group  
Seth Rosenberg & Catherine Lebow  
Mace Rosenstein & Louise de la Fuente  
Ann Rudovsky  
Jack Sanderson  
Lori Saperstein  
Val Schaffner  
Andreas Schaller  
Douglas & Ans Schickler  
Ira Schreger  
Laura Sejen  
Shamos Family Foundation  
Vivien & Michael Shelanski  
Ted & Mary Jo Shen  
Gil Shiva  
Carolee Shubert  
Elizabeth Sidamon-Eristoff & Hunter Lewis  
Patricia J. S. Simpson  
Mike & Janet Slosberg  
Stephen Smith & Ford Rogers  
Matthew Patrick Smyth  
Joan & Laurence Sorkin  
Robert Soros  
Jillian Steadman  
Graham Stephens  
Michael & Marjorie Stern  
Deborah Stewart & James Mintz

Dr. Susan Stewart  
John & Karin Strasswimmer  
The Dorothy Strelsin Foundation  
Elizabeth F. Stribling  
Consulate General of Sweden  
Daniel & Toby Talbot  
Gabrielle Tana  
Alexander Tarakhovsky & Anne Schaefer  
Kathryn Taras & Anthony Eitcher  
Juliet Taylor & James Walsh  
The Polish Cultural Institute in New York  
Catherine K. Tice  
Peter C. Trent  
Jonathan & Cynthia Uejo  
Vanetta Vancak  
Bernardette Vaskas  
Dino Veronese  
Diana Viñoly Interiors  
Patricia Voight & Rachel Wolff  
Thomas Von Foerster  
Iva Yukina  
Cynthia Wainwright & Stephen Berger  
Howard & Ruth Warshower  
Earl D. Weiner  
Jill Weinstein  
The Levy-Westhead Family  
Carolyn Wiener  
Francis H. Williams  
Devera Witkin  
Nancy Workman & Jonathan Miller  
Nancy Young  
Michael & Barbara Zimmerman  
Micha Ziprkowski  
Marina & Yana Zosya  
Matthew & Myra Zuckerbraun  
Anonymous (5)

## \$1,500

Ethan J. Wagner & Thea Westreich Wagner  
Lynn Abell  
Robert & Mary Beth Aberlin  
Nora Abousteit & Joshua Ramo  
Naji Abumrad  
Brice Acosta  
Caroline P. Addison  
Derek & Noreen Adler  
Jacqueline & Joseph Aguanno  
Howard & Roberta Ahmanson  
Ronald & June Ahrens  
Alexandra Alger & Dan Chung  
Daniel Algrant  
James B. Anderson & Dror Katzir  
Linda Andrei  
Matthew & Krista Annenberg  
Stephanie Ansin & Spencer Stewart  
Association Of Theatrical Press  
Milton & Sally Avery Arts Foundation  
S. J. Avery  
Ajay & Sonya Ayyappan  
D.J. & Suzanne Baker  
Scott & Tamara Barasch  
Nancy Barber  
Andrea Barbieri  
Hugo Barreca & Wendy Schlemm  
Samuel & Marion Bass  
Whitney Baxter  
Martine Beamon & Eddie Joyce  
Barbara Becker & Chad Gallant  
Serge Becker  
Lisa & Jim Bedell  
Charlotte Beers  
Kathleen Begala & Yves-Andre Istel  
Anka & Louis Begley  
Carl & Judith Berg  
David I. Berley  
Brigitte Berman  
Jennifer Berman  
Thérèse D. Bernbach  
Marie-Eve Berty  
John & Penelope Biggs  
Karen Binder & Victor Ney  
Stefanie Birkmann & Sunil William Savkar  
Dr. David Biro  
Jeffrey B. Bishop & Jill Baker  
Jeffrey N. Blair & Ivor Bache Clark, III  
Jennie & Jake Blair  
Sean Blakely & Allison Repke  
Patricia Blanchet  
Barry Blecher  
Alexis Bloom  
Ellen & Charles Bock  
Nick Boris  
Gary N. Boston & Dr. Charles Lee  
Bill Bragin & Lisa Philp  
Samy Brahimi & Lizanne Merrill  
Barbara & Gary Brandt  
Gundula Brattke  
Rebecca Brillhart  
Sandra Brinkert  
Sally Brody  
Carolyn Brooks & Allen Rothman  
John & Michelle Brooks  
Andrea Katz & Anthony Brown  
Donnaldson Brown  
Norman & Terri Buchan  
Angela Bucknell

Diane Buglewicz Foote & Walter Foote  
Dennine Bullard  
James Burke  
Sandra L. Burton & Dr. Don Q. Kelly  
Elizabeth Butson  
Monica Byrczek  
William & Regina Cahill  
Mr. Charles Cahn & Dr. Nancy Maruyama  
Ansel M. Caine & Anna Tibbetts  
Cindy & Jonathan Calder  
Deborah Capone  
Charles Carberry  
William M. Carey  
Lise Carter  
Mary Ellen Cashman  
Daiga Chadha & Gaurang Chadha  
Keisha A. Chamberlain & Mathieu S. Chamberlain  
Eric Chang  
Nabil Chartouni  
Beverly & Herbert Chase  
Lori Chemla & Shelley Sonnenberg  
Jaye Chen & Peter Brown  
Pedro Chomnalez  
Neil & Kathleen Chrisman  
Jennifer Chu  
Lisa M. Cirando  
Joan Hardy Clark  
Clifford Chance US LLP  
Anne Coffey  
Jill & Irwin Cohen  
Joanna Cole & Jonathan Cole  
Michele & Terry Cone  
Lois Conway  
Neil Corwin & Margery Cooper  
Joseph Cosgriff  
Marialana Costa  
Peter & Mary Coy  
Curtis Cravens  
Cedomir Crnkovic & Valerie Rubsamen  
Allison Cromwell & Craig Falls  
Michele Cubic & Raymond Velazquez  
Justin Daniel & Josh Cogswell  
Peter & Katharine Darrow  
Jacqueline Z. Davis  
Megan P. Davis  
Monique Y. Davis  
Sabina & Adam Deaton  
Nick Demos & Mary Snow  
Linda Denney  
Elizabeth Denys  
Marie Derosa & Richard McNeil  
Edwin & Paula DeYoung  
Hester Diamond  
Stephen E. & Martha Bakos Dietz  
Daniel DiPietro  
Anne & John Dockery  
Lynn Dolnick  
Miriam Donoho  
Lily Dorment  
Dr. Jack Downhill Jr.  
Donna & Mitchell Drach  
Frank Drury  
Molly Duffy  
Allison & Mark Dunn  
Frederick Eberstadt  
Marcus Edward & Ken O'Neill  
Marty Ellington  
Rachel Elson  
Loren Erstad & David Lerner  
William & Suzanne Esper

Teri Everett & Mark Davidson  
Peter & Joan Faber  
Richard & Florence Fabricant  
David Farer & Elisa King  
Gail Farfel  
Thomas Faust  
Evan Federman  
Martin Feinman & Amy Cooney  
Michael & Nancy Feller  
Edith Ferber  
Karla Fernandes-Vogel  
Robert Ferris & Adrienne Shumway  
Igor Fert  
Joan Salwen Fields  
Arthur & Susan Fleischer  
Jeff & Jenny Fleishhacker  
Lydia Foo  
Andrew & Blake Foote  
Alison Forner & Martha McBrayer  
Seendy Fouron  
Elena Frampton  
Christopher W. Franklin  
Zhauna Franks & Daniel Rechelbacher  
Louis C. Franzetti D.D.S.  
M. Derene Frazier  
Andrew Freireich & Tina Potter  
Katherine Freygang  
Nicholas & Alexandra Fribourg  
Alex Friedman & Erica Tennenbaum  
Mr. & Mrs. Jeffrey F. Friedman  
Sarah B. Friedman & Paul Salama  
Alexander C. & Tillie S. Speyer Foundation  
Donna Jo Fuller  
Susan & Michael Furman  
Trecy & Todd Gaffney  
Paul Gangsei & Susan Herman  
Al Garner  
Richard & Jane Gartner  
Ms. Roberta Garza  
Patricia Geoghegan  
Maxine Gerson  
Claude Ghez MD  
Gregory F. Gilmartin  
Lauren C. Glant & Michael J. Gillespie  
Virginia Gliedman  
Mary Goldberg  
Dr. Michael & Dr. Deborah Goldberg  
Alvia Golden & Carroll Smith-Rosenberg  
Daniel Gonzalez  
I. Michael Goodman & Judith Uman  
Naomi Gordon  
Stephen R. Greenwald & Rebecca A. Sullivan  
The Green-Wood Cemetery  
Jane & Jean-Marie Grenier  
Mimi & Bill Grinker  
Bill Grogan  
Amy & Ronald Guttman  
Gunilla Haac  
Robert D. Hall & Jane Hritz Hall  
Robert Hall  
Patricia Hallstein & Axel Kramer  
Anne & James Hanbury  
Amelia Hancock & Steve Klise  
Kenneth V. Handal & Mary Francina Golden  
Joan & Douglas B. Hansen  
Anna & Raja Harb  
H3 Hardy Collaboration Architecture  
David Hariton & Thomas Lippy  
Layne & Tiffany Harris

Jeremiah Healey & Megan McKee Healey  
Douglas & Jessica Healy  
James G. Croghan & Louis R. Hedgecock  
Robert & Barbara Heelan  
Isaac & Sheila Heimbinder  
Kris Heinzelman  
Mr. James Hendershot  
Jeffery Hentze  
Cecilia & James Herbert  
Herrick, Feinstein LLP  
Samuel & Hagit Hertz  
Sarah Higinbotham  
Adria & Donald Hillman  
Susan Hirschhorn & Arthur Klebanoff  
The Hoffman Law Firm  
Barry Hoffman & Jane Weiss  
Judith M. Hoffman  
Frank Holozubiec  
Karen Brooks Hopkins  
Mark Horowitz & Dorrine Veca  
Katherine Hosford & Christopher Welch  
Catharine Hough & Keryn Lowry  
Timothy Hughes  
Tom Huhn & Nancy Steele  
Laura Hussey  
Alan Hyde  
Margo Hyde  
Jan Insko & Seymour Miles  
John Ittner  
Dr. Lois Jackson  
Pamela Jackson  
Steven & Susan Jacobson  
William Janetschek  
Susan & Stephen Jeffries  
Mr. & Mrs. Dudley D. Johnson  
T. Radey Johnson & Jane Platt  
Andrea Jolles  
Jeremiah Joseph  
Ralph Julius & Ken Nelson  
Genevieve Kahr & Dan Freedberg  
Charles & Ellen Kaltman  
Forrest Karbowski & Catherine McKinney  
Herbert Kasper  
J. J. Kasper Jr.  
Steven R. Schindler & Susan M. Kath  
Aaron & Jacquie Katzel  
Sebastian & Hilke Kaupert  
Michael Kaye & Andrea Loukin  
Peter Keegan  
Susan Kellman  
Jessie Kelly  
Suzanne Greene & John Kelly  
Kickstarter  
William Kistler  
Jonathan Klein  
Dennis A. Klejna  
Bennette Kramer & Eliot Long  
Kenneth & Susan Kramer  
Ashwin Krishnan  
Joan & Albert Kronick  
Rob Krulak  
The Krumholz Foundation  
Roberta Krumholz  
Judith & Douglas Krupp  
Julie Kurtzman  
Christine La Monica Lunn  
Judith A. Langer & Arthur Applebee  
Robert S. Langley  
Drs. John & Judie LaRosa  
Jess Latham

Matthew & Sabrina Leblanc  
Abdul-Rahman Lediju & Angela Nurse-Lediju  
Pablo & Almudena Legorreta  
Jamie Lehrer  
Bruce Leibstone  
James Leitner & Tracy Higgins  
Barbara Lemperly Grant  
Garrick Leonard & Leslie Feder  
Jack P. Levin  
Marcia & William Levy  
Richard Levy & Lorraine Gallard  
Jeffrey Lewis & Karin Miller-Lewis  
Persimmon Foundation  
Michael Li  
Tom Lindberg  
Emma Lindsay  
Seen Lippert & Frederick Landman  
Sandra Lipsman  
Tina Liu  
Rachel Loeb & Zachary Block  
Tyler Lones  
Randy Lott  
Joseph Lovett & James Cottrell  
Kristine S. Lupi  
Jane & Bill Macan  
John Macintosh & Anna Verdi  
Macro Sea Inc.  
Antonio Magliocco Jr. & Carla Solomon  
Camila Pastor & Stephen Maharam  
Brian & Florence Mahony  
Ronald Daignault & Teresa Maloney  
Andrea Marber  
Phillip Marriott & Susannah Taylor  
John Marshall & Seriti Yamini  
William Keith & Lori Marshall  
Frank & Suzanne Martinez  
Andres Mata-Osorio  
Mia Mather  
Kim Maxwell  
Jerri & Tom Mayer  
Liese & Peter Mayer  
Kathryn A. McDonald  
Travis McGhie & Thomas Mizer  
Dr. James & Mrs. Jane McGroarty  
Frances McKenzie  
Susan McLaughlin  
Gordon McLeod & Melanie Grisanti  
Elizabeth McMahon & Patrick Burns  
Julia Meech  
Claudine & Aeris Meredith-Goujon  
Danny & Audrey Meyer  
Joanna M. Migdal  
Franny Milberg  
Timothy Milford & Liza Velazquez  
Jason Miller & Ileana Salazar  
Judith Scofield Miller & David C. Miller  
Sandra & Lowell Mintz  
Hala Mnyamneh  
Donald & Gwen Moffat  
Claire Molloy & Seth Lloyd  
Nikki Mondschein  
Michael & Ginger Montel  
Maria Montoya  
Marissa M. Moore  
John Morning  
Evangeline Morphos  
Kathy Morton & David Nadelman  
Jim & Iris Munson  
Megan Murphy  
Brandon Nelson & Iman Criner Nelson

Consulate General of The Netherlands in New York  
Sheila Nevins  
The New York Community Trust  
New York State Assembly – Peter Abbate  
New York State Assembly – James F. Brennan  
Maury Newburger  
Stephanie & Jesse Newhouse  
Melvin & Carol Newman  
Marguerite Nougé-Sans  
Michael Novodvorskiy  
James C. & Marie Nugent-Head Marlas  
Empire Educational Services  
Adam H. Offenhardt  
Barry Michael Okun  
Roger W. Oliver  
Dr. Catherine Orentreich  
Jon Otis  
Lois Ottombrino  
Kathleen Owens  
Ilana Pachter & William Wynn  
Jean Pagliuso & Tom Cohen  
Nicole & Bruce Paisner  
Dr. & Mrs. Rudolph Palmer  
Cheryl Paradis & Gene McCullough  
Gwenevere Parker  
Estelle Parsons & Peter L. Zimroth  
Kirk & Sue Patrick  
Robert H. Pees  
Marco Perez  
Amy Perry  
Alexandra & Frederick Peters  
Christopher Peters  
Antonia Pew  
Elizabeth Peyton  
Pauline Pinto  
Carl Podwoski & Virginia Lovejoy  
Elizabeth Polanco  
Stuart Post & Christopher Kelley  
Vlad Preoteasa  
Sandra Pierson Prior  
Towonda Purvis  
Theodore Quinn  
Maureen Raley  
Susan & Peter Ralston  
Claudia Bungaro & Christopher Rapcewicz  
Stephen Raphael & Ellen Marks  
Dr. Julie Ratner  
Bridget Read  
Johnathan Reale  
Robert Reilly & Kenneth Stein  
Me & Ro  
Nancy & John Rich  
Richmond Hills High School  
Juergen Riehm & Jody Oberfelder  
Tracey & Phillip Riese  
Katherine E. Ringer  
Julie Robbins  
Daniel Rocha  
Bonnie Roche  
John Rockwell & Linda Mevorach  
The Rodgers & Hammerstein Organization  
Paul A. Rogers  
Connie & Ted Roosevelt  
Andrea M. Rosen  
Lawrence Rosenthal & Joyce Rosenthal  
Erin Ross  
James & Eliza Rossman

Melissa Bowen Rubin & Joshua Rubin  
Maisie Rubinstein  
Lisa & Jonathan Sack  
Josh Safran & Jess Camacho  
Jennifer Sage & Nicolas Grabar  
S. Gerald Saliman & Raymond Vallejo  
Nancy Sands  
Margaret Sarkela & John Curtis  
Martin Satryb & Laurel Hutchinson  
Adam P. Schelifer and the Schleifer Family Foundation  
Evan & Lee S-K  
Anthony Schlesinger & Anne Forward  
Karen Schlesinger  
Lynn Schneider  
Dr. Michael Schober  
Florian Schodel  
Patricia Schoenfeld  
Christopher J. Scholz & Ines Elskop  
Nancy Schwartz Sternoff  
Gabriel & Jolie Schwartz  
Richard Schwartz & Gita Martohardjono  
Ralf Schwieger  
Elisabeth Searles & Richard Friedberg  
Erik & Ruaf Seidel  
Tatiana Serafin  
Ann Settel  
Rena Shagan  
Joshua Shapiro & Heller B. Berman  
Brian & Lindsay Shea  
Michael Shea & Armen Marsoobian  
George Sheanshang  
Gerald Shepps  
Anne P. Sidamon-Eristoff  
Michael Siem & Audrey Walen  
Larry & Ashley Silverman  
Harry Simino  
Mark Simmonds & Marco Contie  
John & Helen Simonson  
Loren & Marlene Skeist  
Johanna Skrzypczyk & Emmanuel Gastard  
Elaine Sloan  
Susan Snodgrass  
Stephen Soba & Jonathan Arnold  
Mitchell & Sandy Sockett  
Kenneth Soehner  
Helen Sogoloff  
James Sollins  
Elizabeth Bartman & Andrew P. Solomon  
Richard & Mimi Somerby  
Connie Sopic/Norma Katz  
Jonathan & Jennifer Soros  
Ellen Sorrin  
Dr. Rogelio Sosnik & Dr. Irene Cairo  
André Spears & Anne Rosen  
Jim & Kristen Spencer  
Joseph Spiegel  
Gayatri Spivak  
Jonathan Sporn  
Shirley Staples & Donald Vangel  
Sarah Stasny  
Gillian Steel  
Jeanne & Steven Stellman  
Joshua Sternoff & Rebecca Gradinger  
Felicia Stingone & Phillip Rutherford  
Gail Stone & Matt Fishbein  
Leila Straus  
Consulate General of Switzerland

Suzzana Takayama  
Sukei Tamarkin  
Julie Tarney  
Josephine & Philip Teverow  
Thornton Thomasetti  
Grace & John Timberlake  
Coralie Toevs  
Michael & Keren Toledano  
Manny Torrijos & Jing Shang Tan  
Stephen Touhey  
Lane Trippe & Marian Sabety  
Linnet Tse & John Forsyth  
Robert Tyrer  
Melissa & Donna Tyson  
James Underwood & Linda Missal  
Bill Updegraff & Aliza Bartfield  
Chauncey Upson  
Raymond & Priscilla Vickers  
Jan Vilcek  
David Wagner  
Marcus Wainwright & Glenna Neece  
Leigh & Robin Walters  
Barbara & Sedgwick Ward  
Seth Washinsky  
Janet C. Waterhouse PhD  
Robert Watt & Dawn Bradford  
John & Martha Watts  
Sandra & George Weiksnr  
David I. Weiner  
Seymour & Kate Weingarten  
Charlene Magen Weinstein  
Elaine Weinstein  
Marjorie & Irv Weiser  
Jonathan Weiss  
Jane & Jonathan Weld  
Laura Walker & Bert Wells  
David F. Wertheimer  
Harry White & Esther Redmont  
Susan Whiting & Bruce Van Dusen  
David Wilf  
Dominic C. Williams & Martha Norrick  
Ross Wisniewski  
Thomas & Sarah Wisniewski  
Elizabeth & Richard Witten  
The Esther & Morton Wohlgemuth Foundation, Inc.  
Doug Wolff  
Dr. Elizabeth Wolff  
Rachel Wood & Scott Olsen  
Fred Wright  
Danielle Durchslag & Aamir Wyne Esq.  
Michael Young & Debra Raskin  
Brett Zaccardi  
Fauzia Zaman-Malik  
Frank & Arrien Zinghini  
Anonymous (6)

*July 1, 2015—June 30, 2016*

# We thank you for your continued support!

# BAM

# BAM STAFF

---

## EXECUTIVES

**Katy Clark**, President  
**Joseph V. Melillo**, Executive Producer  
**Alice Bernstein**, Executive Vice President  
**Stephanie S. Hughley**, Vice President of Education & Humanities, Cinema & BAMcinématek  
**John Lanasa**, Vice President of Marketing & Communications  
**Riccardo Salmona**, Vice President for Institutional Advancement  
**Keith Stubblefield**, Chief Financial Officer and Vice President of Finance & Administration

---

## PRESIDENT'S OFFICE

**Michael Doyle**, Administrative Coordinator

---

## ARTISTIC PROGRAMMING

**Stonie Darling**, Department Manager  
**Juan Pablo Siles**, Coordinator of Artistic Planning

## PROGRAMS & CURATORIAL

**Nick Schwartz-Hall**, Line Producer  
**Amy Cassello**, Assoc. Producer, Next Wave Festival  
**Darrell M. McNeill**, Assoc. Producer, Music  
**Rachel Katwan**, Asst. Line Producer  
**R. Michael Blanco**, DanceMotion USA<sup>SM</sup>, Project Director  
**Sarah Horne**, DanceMotion USA<sup>SM</sup>, Project Manager  
**Paige Haroldson**, **Jason Collins**, DanceMotion USA<sup>SM</sup> Project Assts.  
**Danny Kapilian**, Producer, R&B Festival, MetroTech  
**Steven Serafin**, Special Consultant & Editor, *BAM: The Complete Works*

## ARCHIVES

**Sharon Lehner**, Director of Archives  
**Sarah Gentile**, Digital Project Archivist  
**Louie Fleck**, Archives Manager  
**Carmel Curtis**, **Mary Rhymer**, **Evelyn Shunaman**, Processing Archivists  
**Jan Carr**, Digital Content Writer  
**Anita Goss**, Volunteer Librarian

---

## GENERAL MANAGEMENT

**Patrick J. Scully**, General Manager  
**Sara Danielsen**, Assoc. General Manager, Fisher Building  
**Carrie W. Reynolds**, Assoc. General Manager  
**Jaclyn Bouton**, Senior Project Manager

**Liana Agredo**, **Jessie Fairbanks**, Project Managers  
**Chris Mode**, GM Coordinator, Budgets & Contracts  
**Samuel Denitz**, Administrative Asst. & BAMshop Liaison

## PRODUCTION

**Neil Kutner**, Director of Production  
**Collin Costa**, **Dylan Nachand**, Assoc. Production Managers  
**Paul Bartlett**, **Ryan Gastelum**, **Jennifer Grutza**, **Brian Sciarra**, Production Supervisors  
**Danielle Colburn**, **Laura Williams**, **Palmer Johnston**, Production Coordinators  
**Heli Soell**, Admin. Coordinator

## STAGE CREW

**Thomas Paulucci**, Crew Chief  
**Oscar Gruchalski**, Head Carpenter, OH  
**Paul McManus**, Asst. Carpenter/Flyman, OH  
**James D'Adamo**, Head Electrician, OH  
**Amy Domjan**, Asst. Electrician, OH  
**Nicholas Varacalli**, Master of Properties, OH  
**Marc Putz**, Sound Engineer, OH  
**James Kehoe**, Head Carpenter, HT  
**Joseph Werner III**, Asst. Carpenter, HT  
**John Manderbach**, Head Electrician, HT  
**Edward Donohue**, Master of Properties, HT  
**Alison Dabdoub**, Sound Engineer, HT  
**Tom Holler**, **Richard Wurzbach**, Utility Men  
**Ginger Blake**, Wardrobe Supervisor

## ARTIST SERVICES

**Mary Reilly**, Director of Artist Services  
**Stacey Dinner**, Artist Services Manager  
**Jeannine Baca**, **Britney Polites** Artist Services Representatives  
**Sarah Silverblatt-Buser**, Fisher Artist Services Representative

## THEATER MANAGEMENT

**Christine M. Gruder**, Theater Manager  
**John L. Jones**, Assoc. Theater Manager  
**Sonia Clayton**, **Jacqueline David**, **Leroy Houston**, Theater Staff Supervisors

## BUILDING OPERATIONS

**Cameron Christensen**, Director of Building Operations  
**Roger Davis**, Security Manager  
**Wendy Berot**, Special Projects Manager

**Lynn Alexander**, Facilities Manager  
**Kevin Cecil**, Building Operations Coordinator  
**Markee Glover**, Mailroom Clerk  
**Robyn Goldstein**, Mailroom Asst.  
**Elaine Colon**, **Jean Smith**, Building Services Assocs.  
**Steve McDowell**, Auxiliary Technician  
**Danny Jiang**, CMMS Asst.

## BUILDING MAINTENANCE

**Anthony Shields**, Maintenance Supervisor  
**Daniel Curato**, **Calvin Brackett**, **Ronald Hunter**, Maintainers  
**Carl Blango**, Asst. Maintainer

## SECURITY

**Melvin Patterson**, **Manuel Taveras**, Supervising Attendant Guards  
**Kenneth Aguilera**, **Collie Dean**, Senior Attendant Guards  
**Bobby Arnold**, **Juan Lebron**, Lead Auxiliary Guards  
**Marlon Desouza**, **Kevin Lemon**, **Teonia Smith**, **Andel Thomas**, **Michael Whyte**, Attendant Guards

## CUSTODIAL SERVICES

**Ramon Cabassa**, Custodial Supervisor  
**Yossess Allen**, **Allan Boyce**, **Ludlow Chamberlain**, **Isaias Flores**, **Mayra Guillen**, **Ron Rathan**, **Akeon Thomas**, Custodians

---

## EDUCATION & HUMANITIES & BAMCINEMATEK

**Shana Parker**, Director of Operations for E&H  
**Jennifer Leeson**, Operations Manager for E&H  
**Jackie Katz**, Education Assoc.  
**Victoria Collado**, Education Asst.  
**Rebekah Gordon**, Administrative Asst.

## BAM ROSE CINEMAS

**Efi Shahaar**, Cinema Executive Manager  
**Michael Katz**, Projectionist  
**Adam Goldberg**, Asst. Manager  
**Andreea Drogeanu**, **Brente Kelly**, **Davina Roberts**, **Anthony Shields Jr.**, Head Floor Staff

## BAMCINÉMATEK

**Gabriele Caroti**, Director  
**Nellie Killian**, **David Reilly**, Programmers  
**Jesse Trussell**, Programming Asst.

**Ryan Werner**, Programmer at Large

## EDUCATION

**Steven McIntosh**, Director of Education & Family Programs  
**John P. Tighe**, Asst. Director of Education  
**Eveline Chang**, **Mikal Lee**, **Verushka Wray**, Program Managers  
**Cathleen Plazas**, Program & Evaluation Coordinator

## HUMANITIES

**Violaine Huisman**, Director of Humanities  
**Molly Silberberg**, Humanities Manager

## LEAD INSTRUCTORS

**Joshua Cabat**, Young Film Critics  
**Samara Gaev**, **Nsangu Glenn Gordon**, Arts & Justice  
**Jenny Rocha**, Dancing into the Future  
**Michael LoMonico**, Shakespeare Teaches Teachers

## TEACHING ARTISTS

**Jennifer Armas**, **Brigitte Barnett-Loftis**, **Rebecca Bliss**, **Mahogany Brown**, **Melissa Brown**, **Chia-Ti Chiu**, **Darian Dauchan**, **Harris Eisenstadt**, **Imani Faye**, **Kimani Fowlin**, **Ingrid Gordon**, **Pat Hall**, **Mel House**, **Albert Iturregui-Elias**, **Gwendolyn Kelso**, **Nicole Kempskie**, **Abigail Levine**, **Spencer Lott**, **Farai Malianga**, **WT McRae**, **Michael Mullen**, **Kwesi Nkroma**, **Devin Norik**, **Pamela Patrick**, **Drew Petersen**, **Korey Phillips**, **Mike Ramsey**, **Gwenyth Reitz**, **Jen Shirley**, **Marcus Smalls**, **Keomi Tarver**, **Karen Thornton Daniels**, **Adia Whitaker**, **Todd Woodard**

---

## MARKETING & COMMUNICATIONS

**Sandy Sawotka**, Director of Communications  
**Sarah Garvey**, Assoc. Director of Communications  
**Susan Yung**, Senior Editorial Manager  
**Adriana Leshko**, Senior Publicity Manager  
**David Hsieh**, **Maureen Masters**, Publicity Managers  
**Christian Barclay**, **Christina Norris**, Publicists  
**Hannah Thomas**, Publicity & Marketing Assoc.  
**James Sutton**, Publications Asst.

## CREATIVE SERVICES

**Andrew Sloat**, Creative Director  
**Patrick Morin**, Assoc. Director of Design

# BAM STAFF

**Ryan Rowlett**, Senior Interactive Designer  
**Katie Positerry**, Interactive Designer  
**Kyle Richardson, Alison Whitworth**, Designers  
**Benjamin Cohen**, Assoc. Director of Video  
**Ben Katz**, Video Production Manager  
**Kaitlin Chandler, Alexander Guns**, Video Editors  
**Jenny Choi**, Publications Manager  
**Robert Wood**, Senior Copywriter  
**Seán McKeithan**, Copywriter  
**Shu Chun Xie**, Creative Services Assoc.

## DIGITAL MEDIA & PROJECT MANAGEMENT

**Aaron Weibel**, Manager of Web Production  
**Josephine Llorente**, Digital Media Coordinator  
**Sarah Hayes**, Digital Media Asst.

## MARKETING

**Shannon Lacek**, Director of Marketing  
**Raphaele de Boisblanc**, Senior Marketing Manager  
**Andrew Chan, Melanie Cherry, Allison Kadin**,  
Marketing Managers  
**Rhea Daniels**, Marketing Coordinator  
**Laura Scholl**, Marketing Operations Manager  
**Britt Aronovich**, Marketing Revenue Manager  
**Anna Troester**, Marketing Asst.

## AUDIENCE DEVELOPMENT & STRATEGIC PLANNING

**Molly Meloy**, Director of Audience Development & Strategic Planning  
**Joaquin Esteve**, Advertising Manager  
**Claire Frisbie**, Content Marketing Manager  
**Nathan Gould**, Marketing Manager, Development  
**Chris Tyler**, Content Marketing Asst.  
**Sharlene Chiu**, Customer Loyalty & Strategy Manager

## TICKET SERVICES

**G. Scott Kubovsak**, Director of Ticket Services  
**Kevin McLoughlin**, Head Treasurer  
**Russell Grier**, First Asst. Treasurer  
**Victor Jouvert, Charlie Dolce**, Asst. Treasurers  
**Royda C. Venture**, Ticket Services Manager  
**Georgina Richardson**, Customer Care Manager  
**Latasha McNeil**, Asst. Manager  
**Ryan Mauldin**, Ticket Services Coordinator  
**Edward Raube-Wilson**, Senior Ticket Services Representative  
**Saul Almiachev, Kiana Bilal Mack, Anaïs Blin, Lucca Damilano, Justin Dash, Evan Dice, Robert Ebanks,**

**Miranda Gauvin, Greg Garner, Sophie McNeill, Edgar Mendoza, Warren Ng, Elsie Pacella, Maura Roche, Angela Romualdez, Allyson Steele, Noel Vega, Jalise Wilson**, Ticket Services Representatives

## DEVELOPMENT

**Lucile Hecht**, Admin. Asst. to Vice President for Institutional Advancement

## BOARD RELATIONS & ENDOWMENT

**Denis Azaro**, Board Relations & Endowment Director  
**Alexandra Biss**, Manager of Board Relations

## CORPORATE RELATIONS & SPONSORSHIP

**Chantal Bernard**, Director of Corporate Relations  
**Terrance Knox**, Director of New Business Development  
**Ashley Jacobson**, Senior Corporate Relations Manager  
**Elizabeth Sarkady**, Business Development Manager  
**Rebecca Carew**, Corporate Sponsorship Manager  
**Katerina Patouri**, Sponsorship Asst.

## INDIVIDUAL GIVING

**Barbara Cummings**, Director of Development  
**William Lynch**, Director of Leadership Gifts  
**Glenn Alan Stiskal**, Director of Major Gifts  
**Gwendolyn Dunaif**, Assoc. Director, Major Gifts & Patron Programs  
**Richard Serrano**, Research Manager  
**Maayan Dauber**, Patron Program Coordinator  
**Travis Calvert**, Project Coordinator, Major Gifts

## INSTITUTIONAL GIVING

**Clemente Luna**, Director of Institutional Giving  
**Kailin Husayko, Semra Ercin**, Institutional Giving Managers  
**Stephanie Caragliano**, Institutional Giving Coordinator

## MEMBERSHIP

**Claire Charlesworth**, Director of Membership  
**Sarah Mischner**, Membership Manager  
**Bruce Smolanoff**, Telefund Manager  
**Cheryl-Lyn Miller**, Membership Coordinator  
**Kate Rakowski**, Telefund Asst.  
**Eva Marie Arena, Jessica Benton, Allison Bodwell, Lydia Cardenas, Aaron Feinstein, Kenneth Fitts, Melissa Krzywicki, Thomas Lawler, Emilie McDonald, Samantha Osborne, Katherine Rehbeck, Adrienne Reynolds, Deema Salem, Dakota Scott, Amanda Wilder, Ramon Zubia**, Membership Representatives

## PATRON SERVICES

**Ramzi Awn**, Director of Patron Services  
**Michael Kendrick**, Manager of Patron Services & Donor Relations  
**Jessica Hindle**, Patron Services Coordinator  
**Alexander Jofe, Annie Steingold**, Patron Services Assts.

## PLANNED GIVING

**Stephanie Franco**, Director of Planned Giving

## SPECIAL EVENTS

**Margaret Breed**, Director of Special Events  
**Grace Eubank, James Vause**, Special Events Managers  
**Kimberly Howard**, Special Events and Major Gifts Assoc.  
**Catherine Charnov**, Special Events Coordinator

## VISUAL ART

**Holly Shen**, Curator of Visual Arts  
**Mary Gordanier**, Visual Arts Asst.

## FINANCE & ADMINISTRATION

### CAPITAL PROJECTS

**Jonathan Jones**, Director, Capital Projects  
**Laura Grady**, Capital Projects Manager

### FINANCE

**Kozue Oshiro**, Controller  
**Tameka White**, Asst. Controller  
**Claudia Bailey, Adam Sachs**, Assoc. Directors of Finance  
**Brian Gee**, Accounting Manager  
**Douglas Fischer**, Budget Analyst  
**Tyler Cleveland**, Staff Accountant  
**Yusuf Siddiquee**, Finance Coordinator  
**Iman Bance**, Accounts Payable Administrator  
**Meaghan McLaughlin**, Finance Assistant

### GOVERNMENT & COMMUNITY AFFAIRS

**Dewonnie Frederick**, Community Affairs & Bazaar Manager

### HUMAN RESOURCES

**Seth Azizollahoff**, Director of Human Resources  
**Samara Alexander**, HR Manager  
**Cynthia Smith**, Payroll Manager

**Alexis Boehmler**, Benefits Manager  
**Bram McGinnis, Via Clemena**, HR Assts.

## INFORMATION TECHNOLOGY

**William Allen Lee III**, Director of Information Technology  
**Thomas Brown**, Business Analytics Manager  
**Ira Sibulkin**, Assoc. Director of IT  
**Timothy Assam**, Systems Administrator  
**Svetlana Mikhalevskaya**, Database Developer  
**Jason Q. Minnis**, IT Project Manager  
**Matthew Taylor, Andrei Iliescu**, Web Developers  
**Jersy Rodriguez**, Technical Support Manager  
**Tamar Audate, Tim Chawaga**, Technical Support Techs  
**Susan Bishop**, Administrative Coordinator  
**Lucas Austin**, Junior Desktop Analyst

## PROJECT MANAGEMENT

**Jeremy Dewey**, Director, Project Management & Strategic Planning  
**Ellen Leszynski**, Project Manager

## AUDIENCE RESEARCH & ANALYSIS

**George A. Wachtel**

## BOOKSELLER

**Greenlight Bookstore**

## EUROPEAN PRODUCTION REPRESENTATIVE

**On Tour Ltd., Roger Chapman**

## FILM BUYER

**Adam Birnbaum**

## IMMIGRATION COUNSEL

**Jonathan Ginsburg, Fettman, Tolchin and Majors, PC**

## INSURANCE BROKER

**Dewitt Stern**

## MEDICAL CONSULTANTS

**Ahmar Butt, MD; Anders Cohen, MD**

## RESTAURATEUR

**Great Performances**

*June, 2016*

# Numbers





# BAM FINANCIAL STATEMENTS

BAM's financial statements are audited by Marks Paneth. The summarized Statements of Financial Position as of June 30, 2016 and 2015, and Statements of Activities for the years ended June 30, 2016 and 2015 were derived from BAM's financial statements. The complete audited financial statements are available at [guidestar.org](http://guidestar.org) and [charitiesnys.com](http://charitiesnys.com).

## Statements of Financial Position

<b>Assets:</b>	<b>2016</b>	<b>2015</b>
<b>Assets:</b>		
Cash and cash equivalents	800,429	1,630,350
Accounts and other receivables	382,470	1,004,631
Government receivables, net	2,166,702	724,734
Pledges receivable, net	14,968,641	17,057,817
Prepaid expenses and other current assets	1,379,098	1,587,949
Property and equipment, net	17,945,456	16,626,132
Beneficial interest in BAM Endowment Trust	91,574,003	99,346,428
<b>Total Assets</b>	<b>129,216,799</b>	<b>137,978,041</b>

<b>Liabilities and Net Assets:</b>	<b>2016</b>	<b>2015</b>
<b>Liabilities:</b>		
Accounts payable and accrued expenses, net	6,167,410	5,761,129
Due to BAM Endowment Trust	975,000	131,806
Line of credit	1,750,000	
Deferred revenue	1,152,651	1,018,538
<b>Total Liabilities</b>	<b>10,045,061</b>	<b>6,911,473</b>
<b>Commitments and Contingencies</b>		
<b>Net Assets:</b>		
Unrestricted:		
General operations	(1,128,340)	46,956
Cultural Institutions Retirement System	(1,925,066)	(2,028,059)
Net investment in property and equipment	17,136,534	15,985,249
<b>Total Unrestricted</b>	<b>14,083,128</b>	<b>14,004,146</b>
Temporarily restricted	20,567,411	33,221,414
Permanently restricted	84,521,199	83,841,008
<b>Total Net Assets</b>	<b>119,171,738</b>	<b>131,066,568</b>

<b>Total Liabilities and Net Assets</b>	<b>129,216,799</b>	<b>137,978,041</b>
---	--------------------	--------------------

# BAM FINANCIAL STATEMENTS

## STATEMENTS OF ACTIVITIES

For the years ending June 30, 2016 and 2015

	Unrestricted	Temporarily Restricted	Permanently Restricted	Total 2016	Unrestricted	Temporarily Restricted	Permanently Restricted	Total 2015
<b>Operating Activities</b>								
<b>Operating Revenue:</b>								
Support:								
Special events revenue	1,292,765	123,000	-	1,415,765	3,041,156	5,000	-	3,046,156
Less: direct special event expenses	(188,689)	-	-	(188,689)	(659,785)	-	-	(659,785)
Special events, net	1,104,076	123,000	-	1,227,076	2,381,371	5,000	-	2,386,371
The City of New York	2,948,626	-	-	2,948,626	3,036,264	-	-	3,036,264
New York State	27,383	174,500	-	201,883	148,416	155,000	-	303,416
Federal government	972,908	50,000	-	1,022,908	907,407	55,000	-	962,407
Private sector	19,757,594	3,911,071	-	23,668,665	16,801,978	7,969,438	-	24,771,416
Distribution from BAM Endowment Trust	4,359,525	-	-	4,359,525	3,894,962	-	-	3,894,962
Net assets released from restrictions	7,401,043	(7,401,043)	-	-	7,711,673	(7,711,673)	-	-
<b>Total Support</b>	<b>36,571,155</b>	<b>(3,142,472)</b>	<b>-</b>	<b>33,428,683</b>	<b>34,882,071</b>	<b>472,765</b>	<b>-</b>	<b>35,354,836</b>
<b>Earned Revenue:</b>								
Performance and co-presenter income	14,635,865	-	-	14,635,865	17,648,122	-	-	17,648,122
BAM Rose Cinema	4,064,544	-	-	4,064,544	4,029,366	-	-	4,029,366
Rentals, BAMart sales, interest, and other income	3,042,420	-	348	3,042,768	2,793,307	-	296	2,793,603
<b>Total Earned Revenue</b>	<b>21,742,829</b>	<b>-</b>	<b>348</b>	<b>21,743,177</b>	<b>24,470,795</b>	<b>-</b>	<b>296</b>	<b>24,471,091</b>
<b>Total Operating Revenue</b>	<b>58,313,984</b>	<b>(3,142,472)</b>	<b>348</b>	<b>55,171,860</b>	<b>59,352,866</b>	<b>472,765</b>	<b>296</b>	<b>59,825,927</b>
<b>Operating Expense:</b>								
Program services	47,336,702	-	-	47,336,702	48,262,105	-	-	48,262,105
Management and general	4,031,947	-	-	4,031,947	4,160,707	-	-	4,160,707
Fundraising	7,260,953	-	-	7,260,953	5,990,419	-	-	5,990,419
<b>Total Operating Expense</b>	<b>58,629,602</b>	<b>-</b>	<b>-</b>	<b>58,629,602</b>	<b>58,413,231</b>	<b>-</b>	<b>-</b>	<b>58,413,231</b>
<b>Results From Operations</b>	<b>(315,618)</b>	<b>(3,142,472)</b>	<b>348</b>	<b>(3,457,742)</b>	<b>939,635</b>	<b>472,765</b>	<b>296</b>	<b>1,412,696</b>
<b>Non Operating Activities:</b>								
Depreciation and amortization expense	(1,978,143)	-	-	(1,978,143)	(1,939,923)	-	-	(1,939,923)
Net assets released from restriction for capital projects	1,059,263	(1,059,263)	-	-	1,054,284	(1,054,284)	-	-
NYC Economic Development Corporation capital grant	1,445,663	-	-	1,445,663	328,247	-	-	328,247
(Decrease) increase in beneficial interest in BET	-	(8,452,268)	679,843	(7,772,425)	-	(2,719,781)	5,260,446	2,540,665
<b>Total Non Operating Activities</b>	<b>526,783</b>	<b>(9,511,531)</b>	<b>679,843</b>	<b>(8,304,905)</b>	<b>(557,392)</b>	<b>(3,774,065)</b>	<b>5,260,446</b>	<b>928,989</b>
<b>Change in Net Assets before Pension Related Changes</b>	<b>211,165</b>	<b>(12,654,003)</b>	<b>680,191</b>	<b>(11,762,647)</b>	<b>382,243</b>	<b>(3,301,300)</b>	<b>5,260,742</b>	<b>2,341,685</b>
Cultural Institutions Retirement System	(132,183)	-	-	(132,183)	(2,028,059)	-	-	(2,028,059)
<b>Change in Total Net Assets</b>	<b>78,982</b>	<b>(12,654,003)</b>	<b>680,191</b>	<b>(11,894,830)</b>	<b>(1,645,816)</b>	<b>(3,301,300)</b>	<b>5,260,742</b>	<b>313,626</b>
<b>Net Assets—Beginning of Year</b>	<b>14,004,146</b>	<b>33,221,414</b>	<b>83,841,008</b>	<b>131,066,568</b>	<b>15,649,962</b>	<b>36,522,714</b>	<b>78,580,266</b>	<b>130,752,942</b>
<b>Net Assets—End of Year</b>	<b>14,083,128</b>	<b>20,567,411</b>	<b>84,521,199</b>	<b>119,171,738</b>	<b>14,004,146</b>	<b>33,221,414</b>	<b>83,841,008</b>	<b>131,066,568</b>

# The



# Trust



## Dear BAM Family,

The BAM Endowment Trust (BET) ended the year with a value of \$86,118,904. It was a challenging year for investment performance, with a portfolio return of -3.83%, consistent with the decline in global equity markets. Worries about economic growth and geopolitical risks made this a difficult period for risk assets. Year-to-year volatility is to be expected, but importantly we are meeting our long-term goal of earning a return of at least our 5% spend rate plus inflation. FY 17 performance is off to a strong start.

The BET board approved a distribution to BAM of 5% of the average value of the endowment from the prior 12 quarters.

This provided \$4.5 million to support its impressive programming and operations, and accounts for 8% of BAM's total budget.

We are very grateful for the deep commitment of the BAM and BET boards, as well as the staff. This organization is supported by a dedicated and impressive group of individuals, who work hard to help our special institution flourish.

Sincerely,

Timothy J. Ingrassia  
Chair, BAM Endowment Trust  
Board of Trustees

A great institution is built upon on a secure future. At BAM, a growing endowment is the foundation for expansive programming that continues to set new standards for artistic daring and excellence. The BAM Endowment provides the financial underpinning to launch new artistic initiatives, plan for future years, seize opportunities for institutional advancement, and confront unanticipated challenges. BAM sincerely thanks those listed below for their generous support in securing BAM's future.

---

### **BAM ENDOWMENT TRUST BOARD OF TRUSTEES**

Year ending June 30, 2016

**CHAIR** Timothy J. Ingrassia

**VICE CHAIR** Gabriel Pizzi

**TREASURER** Keith Stubblefield

### **MEMBERS**

William A. Douglass III

Steven G. Felsher

Elizabeth Holtzman

James I. McLaren

Alberto Sanchez

Timothy Sebunya

R. Edward Spilka

Nora Ann Wallace

Henry Christensen III, Ex Officio

Thérèse Esperdy, Ex Officio

Alan H. Fishman, Ex Officio

# BAM ENDOWMENT TRUST

## DONORS

### \$5,000,000 AND ABOVE

Richard B. Fisher & Jeanne Donovan Fisher  
The Howard Gilman Foundation  
The Peter Jay Sharp Foundation  
Lila Wallace-Reader's Digest Endowment Fund for  
Community, Educational, & Public Affairs Programs

### \$1,000,000 AND ABOVE

Altria Group, Inc./Next Wave Forward Fund  
BAM Fund to Support Emerging and Local Musicians  
Brooklyn Community Foundation  
The Irene Diamond Fund  
Doris Duke Charitable Foundation  
Emily H. Fisher  
The Ford Foundation Fund to Support Collaborative  
Creativity Among U.S. Artists  
The Andrew W. Mellon Foundation Fund For Opera &  
Music-Theater  
Bruce C. Ratner  
William Boss Sandberg  
The Peter Jay Sharp Fund for Opera and Theater  
The SHS Foundation  
The Starr Foundation

### \$500,000 AND ABOVE

The Campbell Family Foundation  
The Devitre Fund  
Judith R. & Alan H. Fishman  
Charles J. & Irene F. Hamm  
Maribelle & Stephen Leavitt  
Diane & Adam E. Max  
Mary & Jim Ottaway Jr. in honor  
of Ruth Blackburne Ottaway  
Rockefeller Brothers Fund  
Jonathan F.P. & Diana V.C. Rose  
Martha A. & Robert S. Rubin  
Nora Ann Wallace & Jack Nusbaum

### \$250,000 AND ABOVE

The Bohem Foundation  
The Jessica E. Smith and Kevin R. Brine  
Charitable Trust  
The Charles & Valerie Diker Dance Endowment Fund  
The Horace W. Goldsmith Foundation  
Michael Bancroft Goth Endowed Annual  
Performance Fund  
William Randolph Hearst Endowment for Education and  
Humanities Programs  
The Rita & Alex Hillman Foundation  
Carole & Irwin Lainoff  
Maxwell Family Fund in Community Funds, Inc.  
The Geraldine Stutz Trust, Inc.

### \$100,000 AND ABOVE

Michael Bailkin, Marvin Levine, Jesse Masyr,  
David Stadtmauer  
Robert & Joan Catell Fund for Education Programs  
Neil D. & Kathleen M. Chrisman  
Mr. & Mrs. Henry Christensen III  
Madison S. Finlay  
Francena T. Harrison Performance Fund  
Rita K. Hillman  
HSBC Bank USA, N.A.  
Richard Hulbert  
Independence Community Bank  
Stephanie & Tim Ingrassia  
Mr. & Mrs. Edgar A. Lampert  
Annie Leibovitz & Studio  
Leo Burnett, USA  
James McLaren & Lawton Fitt  
Sarah G. Miller & Frank L. Coulson  
The Morgan Stanley Community and Educational Fund  
J.P. Morgan & Co. Incorporated  
The Jerome Robbins Foundation, Inc.  
May & Samuel Rudin Family Foundation  
Mr. & Mrs. Ame Vennema

Another way to help BAM prepare for the future is by making a provision in your estate plans. Create a legacy for many generations to come and ensure BAM's excellence continues for the next 150 years. Existing options for planned giving include making a bequest in your will, and naming BAM as a beneficiary in your retirement plan or insurance policy, among others. Unless otherwise specified by a donor, it is BAM's policy to apply planned

gifts toward its endowment. Individuals who have made such gifts are recognized in the select group of patrons known as BAM Angels. [www.bam.org/plannedgiving](http://www.bam.org/plannedgiving)

For more information on Planned Giving opportunities please contact William Lynch at 718.636.4186 or [wlynch@BAM.org](mailto:wlynch@BAM.org). All inquiries will remain strictly confidential.

Our special thanks to the foresight of the charitable BAM Angels listed below.

Verizon Communications  
The Isak and Rose Weinman Foundation  
in honor of Madame Lilliana Teruzzi  
The Winston Foundation  
Anonymous

### BAM ANGELS

Denis Azaro  
Bettina Bancroft  
Robert & Joan Catell  
Neil D. Chrisman  
Mr. & Mrs. Henry Christensen III  
Mallory Factor  
Madison S. Finlay  
Richard B. Fisher  
Judith R. & Alan H. Fishman  
Barry M. Fox  
Rita Hillman  
Barbara T. Hoffman  
William Josephson  
Charlotte & Stanley Kriegel

Edgar A. Lampert  
Harvey Lichtenstein  
Phyllis Holbrook Lichtenstein  
Hamish & Georgene Maxwell  
Scott C. McDonald  
Evelyn & Everett Ortnier  
Frank J. & Adeline Pannizzo  
William Winthrop Parsons  
Marie D. Powers  
David L. Ramsay, MD  
William Boss Sandberg  
Louis Sanders  
Harriet L. Senz  
Toni Mendez Shapiro  
Bella F. Stoll  
Lynn M. Stirrup  
PaulaMarie Susi  
Charlene Magen Weinstein  
Judge Franklin R. Weissberg  
Carol Yorke & Gerard Conn

# BAM ENDOWMENT TRUST

## FINANCIAL STATEMENTS

BET's financial statements are audited by Marks Paneth. The summarized Statements of Financial Position as of June 30, 2016 and 2015, and Statements of Activities for the years ended June 30, 2016 and 2015 were derived from BET's financial statements. The complete audited financial statements are available at [guidestar.org](http://guidestar.org) and [charitiesnys.com](http://charitiesnys.com).

### Statements of Financial Position

Assets:	2016	2015
Cash and cash equivalents	2,730,002	3,583,854
Investments	83,591,843	90,956,847
Due from The Brooklyn Academy of Music, Inc.	975,000	131,806
Pledges receivable - net	4,304,529	4,697,836
<b>Total Assets</b>	<b>91,601,374</b>	<b>99,370,343</b>

Liabilities and Net Assets:	2016	2015
<b>Liabilities:</b>		
Pooled income fund liabilities	27,370	23,915
<b>Total Liabilities</b>	<b>27,370</b>	<b>23,915</b>
<b>Commitments and Contingencies</b>		
<b>Net Assets:</b>		
Unrestricted - board designated	8,782,771	17,240,852
Temporarily restricted	84,639	78,825
Permanently restricted	82,706,594	82,026,751
<b>Total Net Assets</b>	<b>91,574,004</b>	<b>99,346,428</b>
<b>Total Liabilities and Net Assets</b>	<b>91,601,374</b>	<b>99,370,343</b>

# BAM ENDOWMENT TRUST

## STATEMENTS OF ACTIVITIES

For the years ending June 30, 2016 and 2015

	Unrestricted Board Designated	Temporarily Restricted	Permanently Restricted	Total 2016	Unrestricted Board Designated	Temporarily Restricted	Permanently Restricted	Total 2015
<b>Revenues and Other Support:</b>								
Contributions	-	7,533	679,843	687,376	2,000	-	5,260,446	5,262,446
Interest and dividends	1,404,451	-	-	1,404,451	1,321,018	-	-	1,321,018
Miscellaneous income	1,140	-	-	1,140	3,824	-	-	3,824
Change in pooled income fund	-	(987)	-	(987)	-	1,789	-	1,789
<b>Total Revenues and Other Support</b>	<b>1,405,591</b>	<b>6,546</b>	<b>679,843</b>	<b>2,091,980</b>	<b>1,326,842</b>	<b>1,789</b>	<b>5,260,446</b>	<b>6,589,077</b>
<b>Expenses:</b>								
Distribution - The Brooklyn Academy of Music, Inc.	4,359,525	-	-	4,359,525	3,894,962	-	-	3,894,962
Investment fees	456,286	-	-	456,286	571,150	-	-	571,150
Management fee	200,000	-	-	200,000	200,000	-	-	200,000
Audit, insurance, filing, and other fees	37,385	-	-	37,385	43,559	-	-	43,559
<b>Total Expenses</b>	<b>5,053,196</b>	<b>-</b>	<b>-</b>	<b>5,053,196</b>	<b>4,709,671</b>	<b>-</b>	<b>-</b>	<b>4,709,671</b>
<b>Results From Operations</b>	<b>(3,647,605)</b>	<b>6,546</b>	<b>679,843</b>	<b>(2,961,216)</b>	<b>(3,382,829)</b>			
Non Operating Activities:								
Unrealized (loss) on investments	(4,434,279)	(732)	-	(4,435,011)	(856,820)	(1,745)	-	(858,565)
Realized (loss) gain on investments	(376,197)	-	-	(376,197)	1,519,824	-	-	1,519,824
<b>Total Non Operating Activities</b>	<b>(4,810,476)</b>	<b>(732)</b>	<b>-</b>	<b>(4,811,208)</b>	<b>663,004</b>	<b>(1,745)</b>	<b>-</b>	<b>661,259</b>
<b>Change in Total Net Assets</b>	<b>(8,458,081)</b>	<b>5,814</b>	<b>679,843</b>	<b>(7,772,424)</b>	<b>(2,719,825)</b>	<b>44</b>	<b>5,260,446</b>	<b>2,540,665</b>
<b>Net Assets—Beginning of Year</b>	<b>17,240,852</b>	<b>78,825</b>	<b>82,026,751</b>	<b>99,346,428</b>	<b>19,960,677</b>	<b>78,781</b>	<b>76,766,305</b>	<b>96,805,763</b>
<b>Net Assets—End of Year</b>	<b>8,782,771</b>	<b>84,639</b>	<b>82,706,594</b>	<b>91,574,004</b>	<b>17,240,852</b>	<b>78,825</b>	<b>82,026,751</b>	<b>99,346,428</b>

BAMM